

1945 - 2015

70
Years

Superior Clamping and Gripping

SCHUNK 

Highlights Program Gripping Systems

NEW Trends, Innovations
and more than 80 No.1 Products



Superior Clamping and Gripping

Jens Lehmann stands for safe, precise gripping and holding. As a brand ambassador of the SCHUNK team, the No. 1 goalkeeper represents our global competence leadership for clamping technology and gripping systems. The top performance of SCHUNK and Jens Lehmann are characterized by dynamics, precision, and reliability.

For more information visit our website:
www.gb.schunk.com/Lehmann

J. Lehmann
Jens Lehmann





Henrik A. Schunk, Kristina I. Schunk, brand ambassador Jens Lehmann, and Heinz-Dieter Schunk

Top Performance in the Team

SCHUNK is the world's No. 1 for clamping technology and gripping systems – from the smallest parallel gripper to the largest chuck jaw program.

In order to boost efficiency, SCHUNK customers have bought more than 2,000,000 precision toolholders, 1,000,000 SCHUNK grippers, and 100,000 lathe chucks and stationary workholding systems so far.

This makes us proud and motivates us to attain new top performances.

As a competence leader, we recognize and develop standards with a large potential for the future, which will drive the rapid progress in many industries.

Our customers profit from the expert knowledge, the experience, and the team spirit of more than 2,500 employees in our innovative family-owned company.

The Schunk family wishes you improved end results with our quality products.

Heinz-Dieter Schunk

Henrik A. Schunk

Kristina I. Schunk

SCHUNK Components The right Solution for every Trend.

With pioneering spirit and perfectionism we shape the future of gripping systems. As trend setters, we are decisive leaders in cutting edge automation topics with our safe, robust and intelligent gripping technology. We accept the challenge and open up new possibilities in sustainable, efficient production automation with our gripping competence and no. 1 products.

More than **2,500** standard grippers

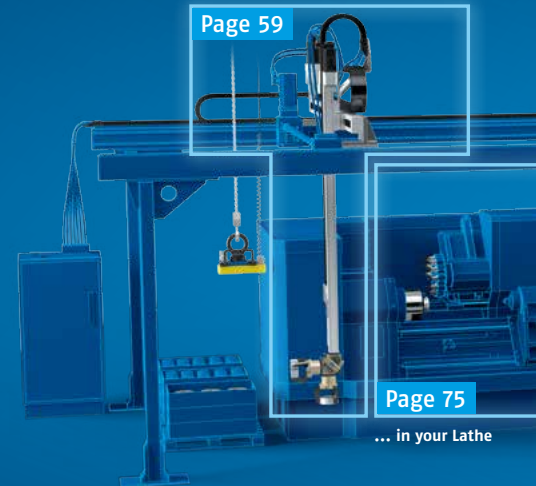
More than **300** mechatronic grippers

More than **12,000** gripping system solutions implemented

More than **1,000,000** products in use worldwide

... in your Automated Handling System

Page 59



Page 75

... in your Lathe



Page 8

The NEW SCHUNK PGN-plus and PGN-plus-Electric Grippers

The NEW SCHUNK PGN-plus gripper and its mechatronic counterpart, the NEW PGN-plus-Electric – now with NEW permanent lubrication in the multi-tooth guidance! Experience the new benchmark for universal grippers.



Page 10

SCHUNK Finger Designer eGRIP NEW: Gripper Finger made of Aluminum and Steel

Additive manufactured gripper finger – in addition to polyamide, now also available in aluminum and steel at the press of a button. With SCHUNK eGRIP, your gripper is designed and ordered in 15 minutes.



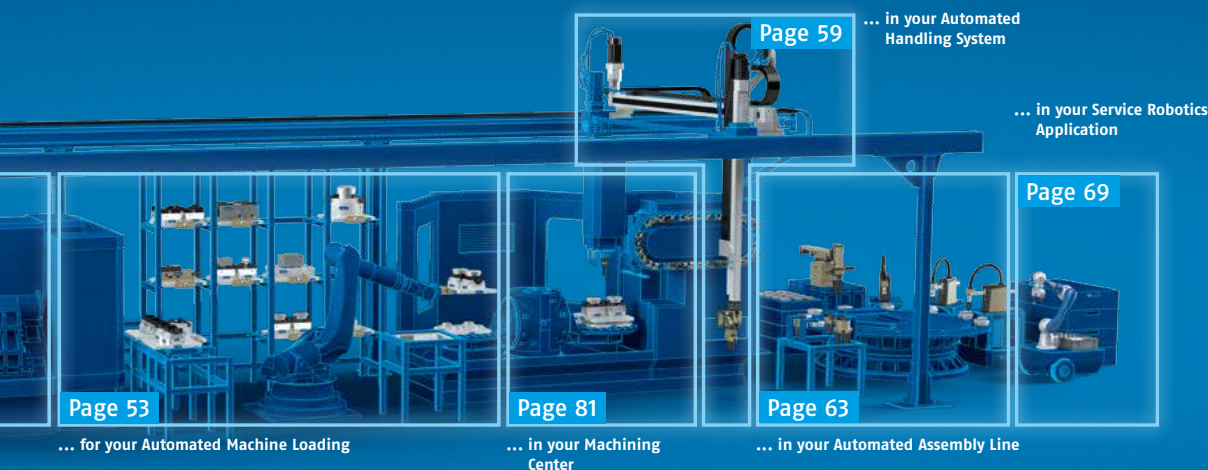
Page 12

Mega Trend Industry 4.0

Intelligent SCHUNK components deliver information, can be networked and are ready for Industry 4.0. Discover the SCHUNK potential for smart production processes.

It's time to use your machine's full potential!

Our superior components can unlock potential you didn't even know you had. In your machine. SCHUNK Synergy – the perfectly harmonized relationship between clamping technology and gripping systems turns our customers into productivity champions ...



The NEW SCHUNK Website – Concentrated Know-how Online

Informative, fast, intuitive. The new SCHUNK web presence sets a benchmark with its exceptional user friendliness and intuitive operation – on desktops, tablets or smartphones.

www.schunk.com



SCHUNK Innovations 2016

Discover SCHUNK benchmark products, innovations and assembly enhancements that are setting standards around the world in our customer's added value chains.



SCHUNK No. 1 Products

Maximize the potential of your machine. With superior SCHUNK components and SCHUNK Synergy – perfectly harmonized interplay between clamping technology and gripping systems.

Awards

With our pioneering spirit and perfectionism, we create the latest developments in gripping systems and clamping technology. Highly recognized and coveted awards and prizes honor the excellent performance of our company, as well as our entire SCHUNK team.

We are proud that our total commitment contributed to gaining these achievements. We want to take this opportunity of saying thank you for the repeated recognition – at both the national and international level.



Dr. Rudolf Eberle Prize
1986 Gripping Systems

EuroMold Award
1998 TRIBOS
2002 SINO-T



iF product design award
1999 TRIBOS
2004 ROTA THW plus
2004 SRU
2005 TANDEM PZS
2009 ZENTRICO THL plus
2011 PHL
2012 ROTA NCL
2015 EGS

Junior Chamber Prize
2005 Junior Chamber Prize
2008 Junior Chamber Prize

Technology Award "Tech-Stars"
2006 3-Finger Dextrous Gripper Hand



Enterprise Medal of the State of Baden-Wuerttemberg
2006 Heinz-Dieter Schunk

A & D Best Product Award
2007 System GEMOTEC



Industry Award
2008 Machine Building: Gripper with Spindle Interface
2008 SWS-I-011
2010 PPU-E
2012 EGP 40 (BEST OF 2012)
2013 NSR Robot Coupling (BEST OF 2013)



MM Award at AUTOMATICA
2008 Dextrous Hand SDH-2
2010 MPG-plus
2012 Powerball Lightweight Arm LWA 4P
2014 SCHUNK Safety System



German Mechanical Engineering Prize
2008 Heinz-Dieter Schunk



Process Innovation Award
2009 UNIPLACE

Trade magazine KE Konstruktion & Engineering
2009 PPU (November 2009)
2010 CFK (August 2010)



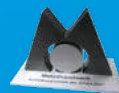
Engelberger Robotics Award
2010 Heinz-Dieter Schunk



Bosch Global Supplier Award
2011/2012 SCHUNK GmbH & Co. KG



Preferred Supplier of the Bosch Group
2012 SCHUNK GmbH & Co. KG
2013 SCHUNK GmbH & Co. KG



Training Company of the Year Federal Metal Association
2011 SCHUNK GmbH & Co. KG



red dot award
2013 Powerball Lightweight Arm LWA 4P



MM Innovation Prize – Milestones of the Industry
2015 SCHUNK GmbH & Co. KG



"Entrepreneurial Heart"
WirtschaftsWoche and the company Würth
2016 Henrik A. Schunk

Contents

	Page
Highlights	8
The NEW SCHUNK Grippers PGN-plus and PGN-plus-Electric	8
SCHUNK eGRIP Finger Designer	10
Gripping Meets Industry 4.0	12
Gripping Meets Robotics	14
The NEW SCHUNK Website	20
New Products	21
SCHUNK Grippers	22
Rotary Gripping Modules	32
Rotary Modules	34
Linear Modules	36
Modular Assembly Automation	38
Robot Accessories	40
Accessories	44
SCHUNK No. 1 Products for	46
Your Automated Machine Loading	53
Your Automated Handling System	59
Your Automated Assembly	63
Your Service Robotics Application	69
Your Lathe	75
Your Machining Center	81
SCHUNK Contact	90

+ NEW: up to 50% longer Gripper Fingers

The higher maximum moments of the improved SCHUNK multi-tooth guidance enable use of longer gripper fingers.

+ Diverse accessories

Wide range of high-quality accessory components and matching sensor systems.

+ 2 positions for sensor installation

Optimally integrated in the housing.

+ Made in Germany

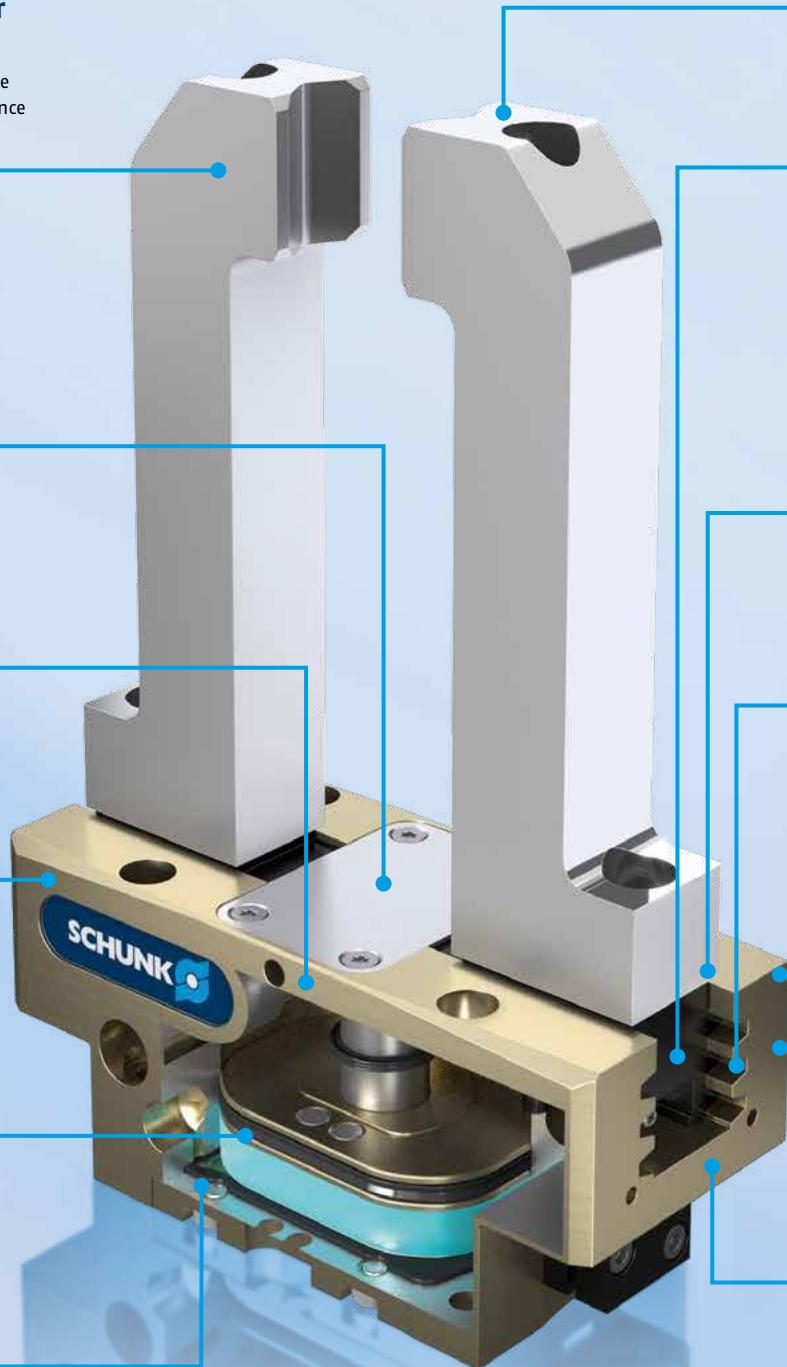
In the city of Brackenheim, home of Theodor Heuss.

+ NEW: Up to 50% higher gripping force

With the enlarged surface of the drive piston.

+ 3 mounting options

Three screw directions on two gripper sides.



+ Up to 21,800 N
of gripping force

+ **NEW: Maximum reliable performance with up to 60% larger angled surface**

Larger angled surface and therefore lower surface pressure for low-wear transmission of forces to the base jaw for a reliable process.

+ **Design with optimized interfering contours**

Ideal for use in confined spaces.

+ **NEW: Lifelong maintenance-free***

The SCHUNK multi-tooth guidance with continuous lubricant pockets ensures even, permanent lubrication.

+ **2,120 variations**

To meet every requirement.

+ **55 stroke variants**

+ **Workpiece weight of up to 80 kg**

The NEW SCHUNK PGN-plus Gripper! Now NEW with Permanent Lubrication in the Multi-tooth Guidance!

The NEW PGN-plus with its unique permanent lubrication combines innovative technology with SCHUNK gripping technology that has proven its effectiveness 100,000 times over. It is based on the SCHUNK PGN-plus with multi-tooth guidance, the best-selling premium product at the top of the market. With the technological perfection and unique precision of its multi-tooth guidance, the SCHUNK PGN-plus sets the benchmark for pneumatic universal grippers.

Never before has a gripper been as precise as with the superior multi-tooth guidance from SCHUNK. Now, SCHUNK has equipped the multi-tooth guidance with continuous lubricant pockets. They ensure permanent lubrication as well as a rapid and evenly distributed lubricant film, even with short strokes.

The end result: permanent lubrication increases the already long life span of the SCHUNK perennial, making it practically maintenance-free.

This crucial advantage of the NEW SCHUNK PGN-plus universal gripper is further enhanced by its mechatronic counterpart, the NEW PGN-plus Electric:

- Rapid and even lubricant distribution even with short strokes
- Reduced total cost of ownership (TCO)
- Permanently higher performance
- More compact, efficient systems
- Continuously reliable and robust

For more information see

[pages 22 to 25](#)

* More than 50 million cycles under normal, clean operating conditions.

SCHUNK eGRIP Finger Designer Gripper Fingers at the press of a Button.

Designed and ordered in 15 Minutes.

SCHUNK eGRIP is the first fully automatic, web-based 3D design tool for additive manufactured gripper fingers. The license-free, browser-based web tool dramatically shortens design and ordering times for customized gripper fingers.

Your advantages with the SCHUNK eGRIP Finger Designer

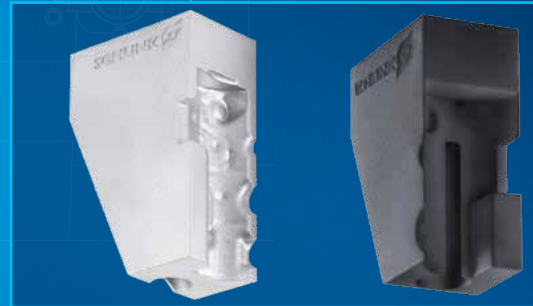
- ✓ Delivered in **1 week**
- ✓ **100%** accurate fitting
- ✓ **50%** cost reduction for gripper fingers



www.egríp.schunk.com

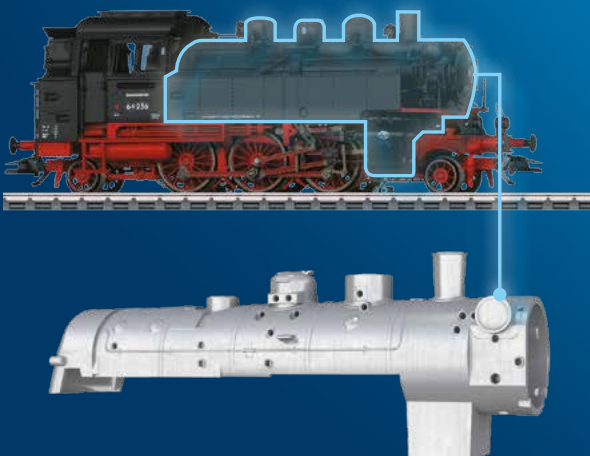


Pneumatic SCHUNK gripper NEW PGN-plus



Practical example.

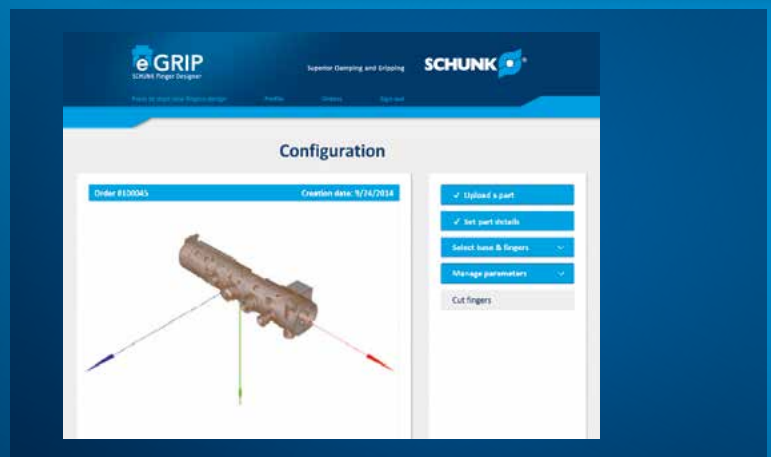
SCHUNK eGRIP also makes it possible to easily achieve **form-fit finger geometries**, which are otherwise difficult or impossible to manufacture.



Cast-iron workpiece

Steam boiler of a model railway locomotive

✓ Upload a part



Simply **upload** the **STEP** or **STL** file for the workpiece. Add the **specific requirements**, such as **weight**, **installation position** of the gripper or **finger length**.



Pneumatic
SCHUNK gripper
MPG-plus



Electric
SCHUNK gripper
EGP



Pneumatic
SCHUNK gripper
NEW PGN-plus

Individual gripper finger made of polyamide and now NEW made of steel and aluminum

Customized for every user with a choice of three materials. In addition individual gripper fingers made of polyamide, **SCHUNK eGRIP** now extends the offer to include additive manufactured fingers made of aluminum and steel. An integrated lightweight structure lowers the weight of **SCHUNK eGRIP** metal fingers by up to 50 percent. More information is available on [pages 30 and 31](#)



Now NEW!
Gripper fingers made of steel and aluminum

Online design and
webshop order in
15 minutes



Delivered in
1 week



SCHUNK eGRIP designs custom gripper fingers with the **optimal 3D contour** and a detailed offer including **price and delivery time**.

With **SCHUNK eGRIP** you receive custom SCHUNK gripper fingers fast.

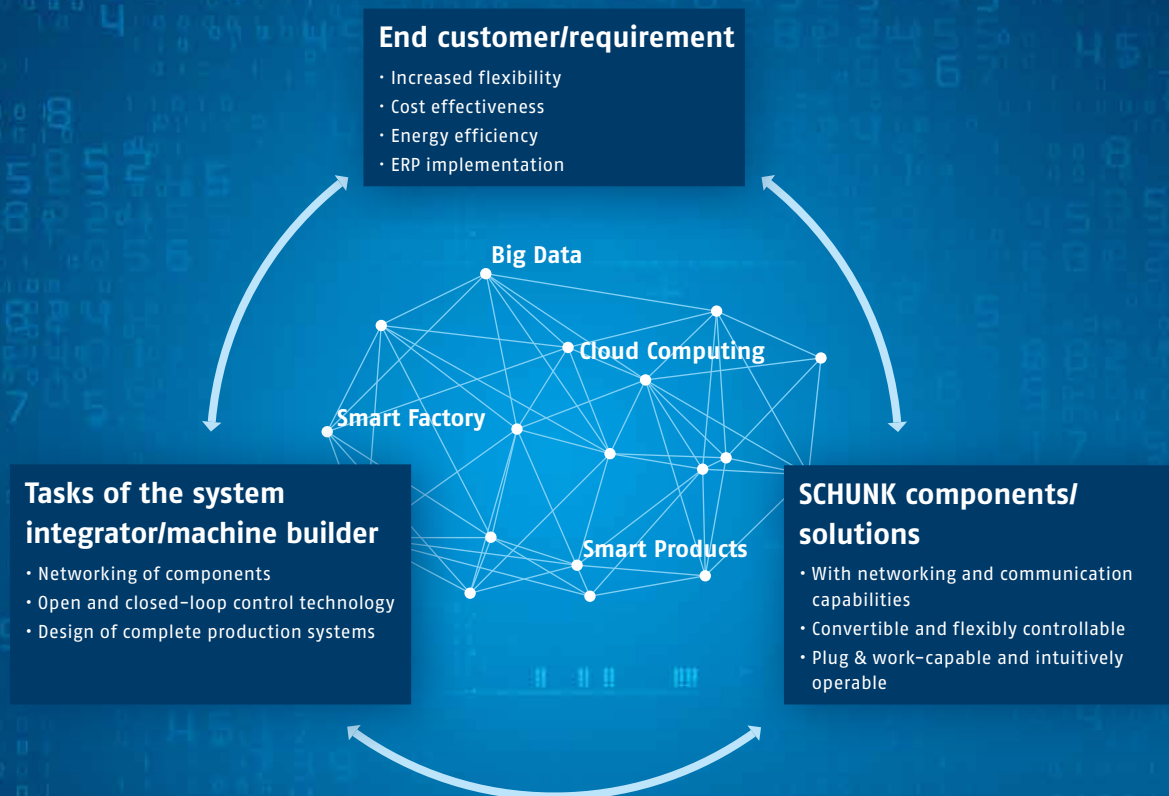
The Mega Trend of Industry 4.0

The term "Industry 4.0" represents an as yet incompletely perceived change in existing production structures and markets. This is because the intermingling of production and information technology within networked factories is creating new forms of wealth creation.

SCHUNK already allows its customers to achieve full potential. Reduction in production costs and set-up times as well as providing efficient, intelligent, mechatronic components from the world's largest product portfolio. This is also our objective for Industry 4.0. With SCHUNK Synergy, the perfectly matched interplay between clamping technology and gripping systems, we are showing our customers new

approaches to designing more efficient and automated production processes. Even today, intelligent SCHUNK components with networking capability provide the basis for flexible production automation. Of course, in close cooperation with machine builders or system integrators, it goes without saying.

Industry 4.0 Networking



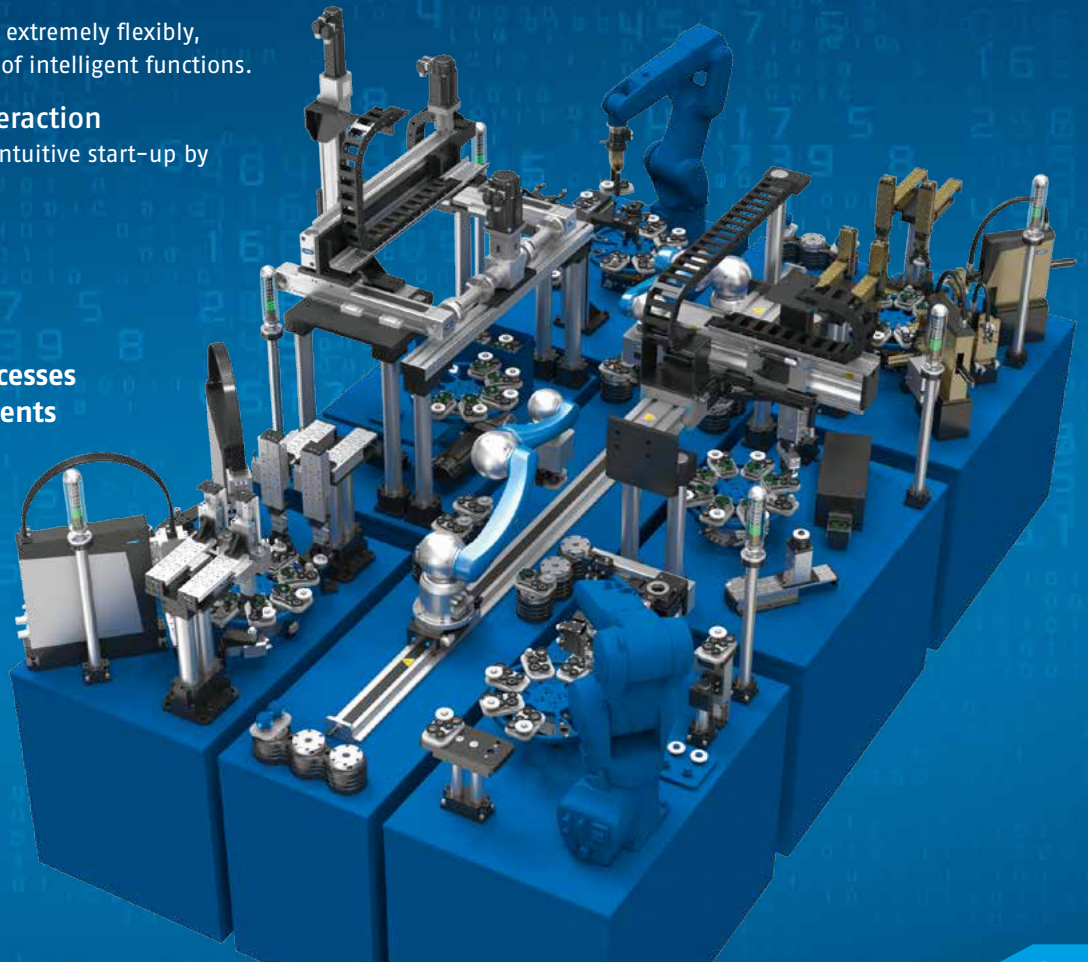
Sustainable Gripping Systems

SCHUNK components achieve more than one task. They supply information. As a partner for end customers, system integrators and machine builders, SCHUNK offers the widest product range for robots and handling solutions capable of delivering information and networking, i.e. Industry 4.0-ready.

The properties are clearly adapted to the needs of industry:

- **Flexibility**
Freely positionable SCHUNK components that are quick and intuitive to adjust.
- **Communication/interface**
SCHUNK components offer a wide range of communication interfaces for networking.
- **Distributed/integrated intelligence**
In this context, SCHUNK is pushing ahead with future topics such as IO-Link and NFC.
- **Mobility**
Energy-efficient drives and components developed with an eye to lightweight construction establish important basic preconditions.
- **Mechatronization**
Components can be used extremely flexibly, allowing a large number of intelligent functions.
- **Human/machine interaction**
SCHUNK components for intuitive start-up by simple configuration.
- **Safety**
Functional safety through certified, safe SCHUNK components.
- **Quality assurance monitoring**
SCHUNK components deliver precise information for quality assurance and for monitoring system parameters and process data.
- **Conversion capability**
Adaptation of the SCHUNK component to the customer's requirement. You benefit from the ability to configure variants right through to complete customer-specific solutions.

**Industry 4.0 –
Smart Production Processes
with SCHUNK Components**



Gripping Meets Robotics

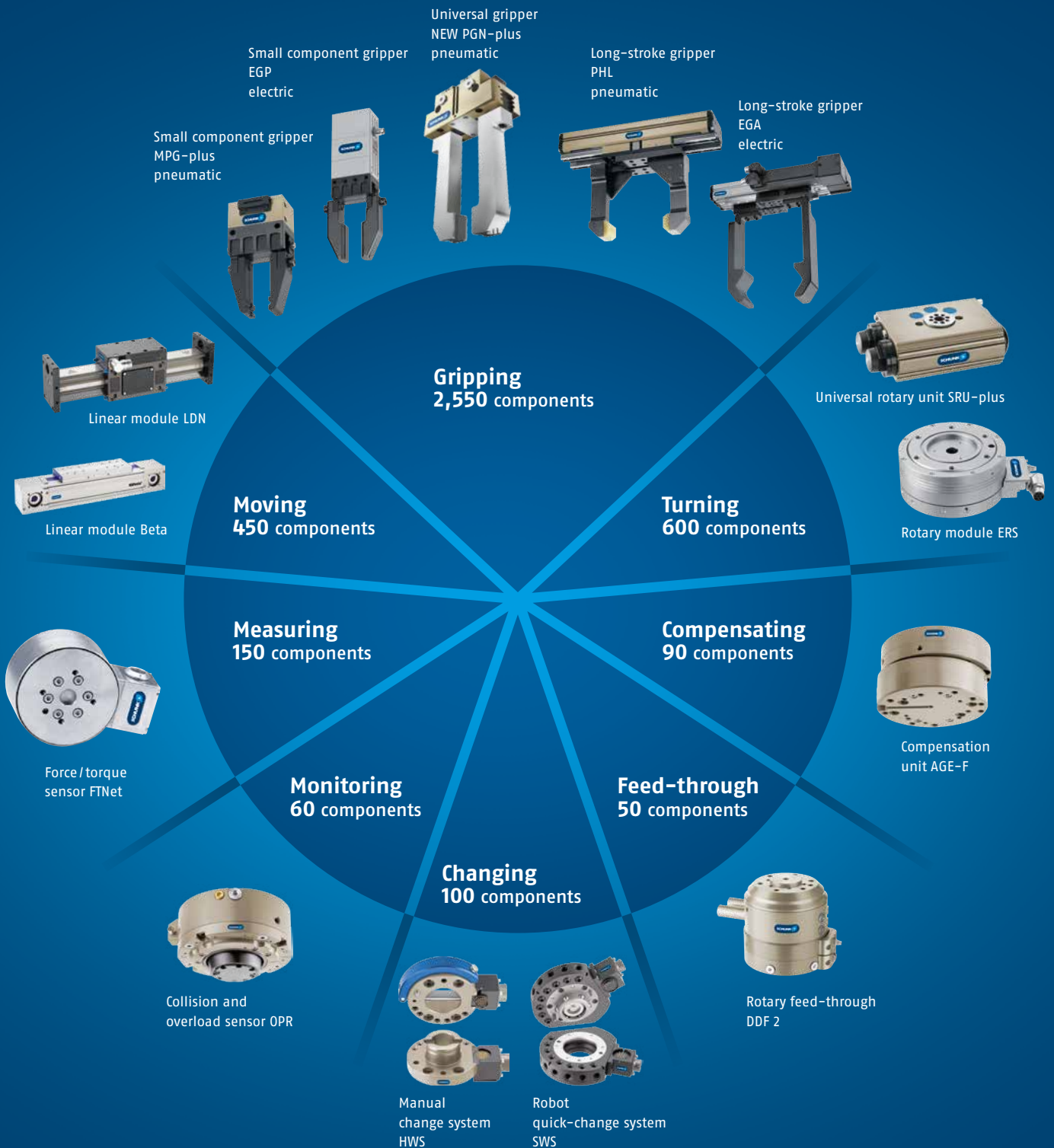
**Discover SCHUNK End-of-Arm Expertise!
For every Robot, every Industry,
every Handling Task.**

With its components and gripping systems SCHUNK sets standards worldwide in automation for every sector.

Our robot accessories include a uniquely extensive standard range of modules for the mechanical, sensoric, and power connection of handling devices and robots. The comprehensive range of robust and durable gripping modules for small components and universal gripping modules features high product quality, precision, and numerous sensing options.

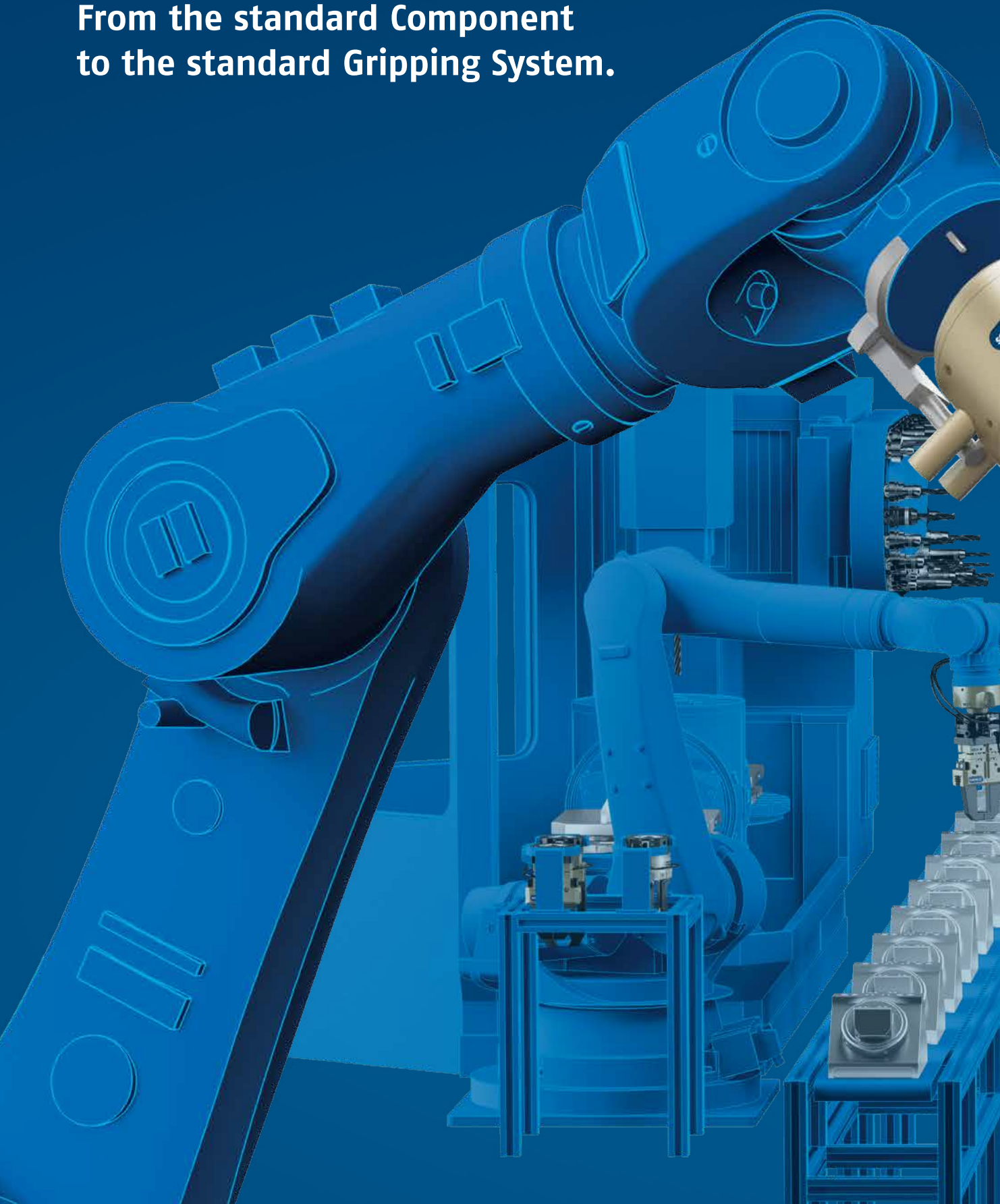
With axis system handling solutions SCHUNK also opens up new perspectives for optimally priced and value-added automation solutions from a single source.

Take Advantage of the SCHUNK Modular System with more than 4,000 standard Components.



The SCHUNK End-of-Arm E

From the standard Component
to the standard Gripping System.



xpertise ...

... for your
articulated arm robot

Feed-throughs

SCHUNK DDF 2 Rotary Feed-through [Page 67](#)

Connecting

SCHUNK Adapter Plate [Page 64](#)

Monitoring

SCHUNK OPR Collision and
Overload Sensor [Page 60](#)

Joining and Compensating

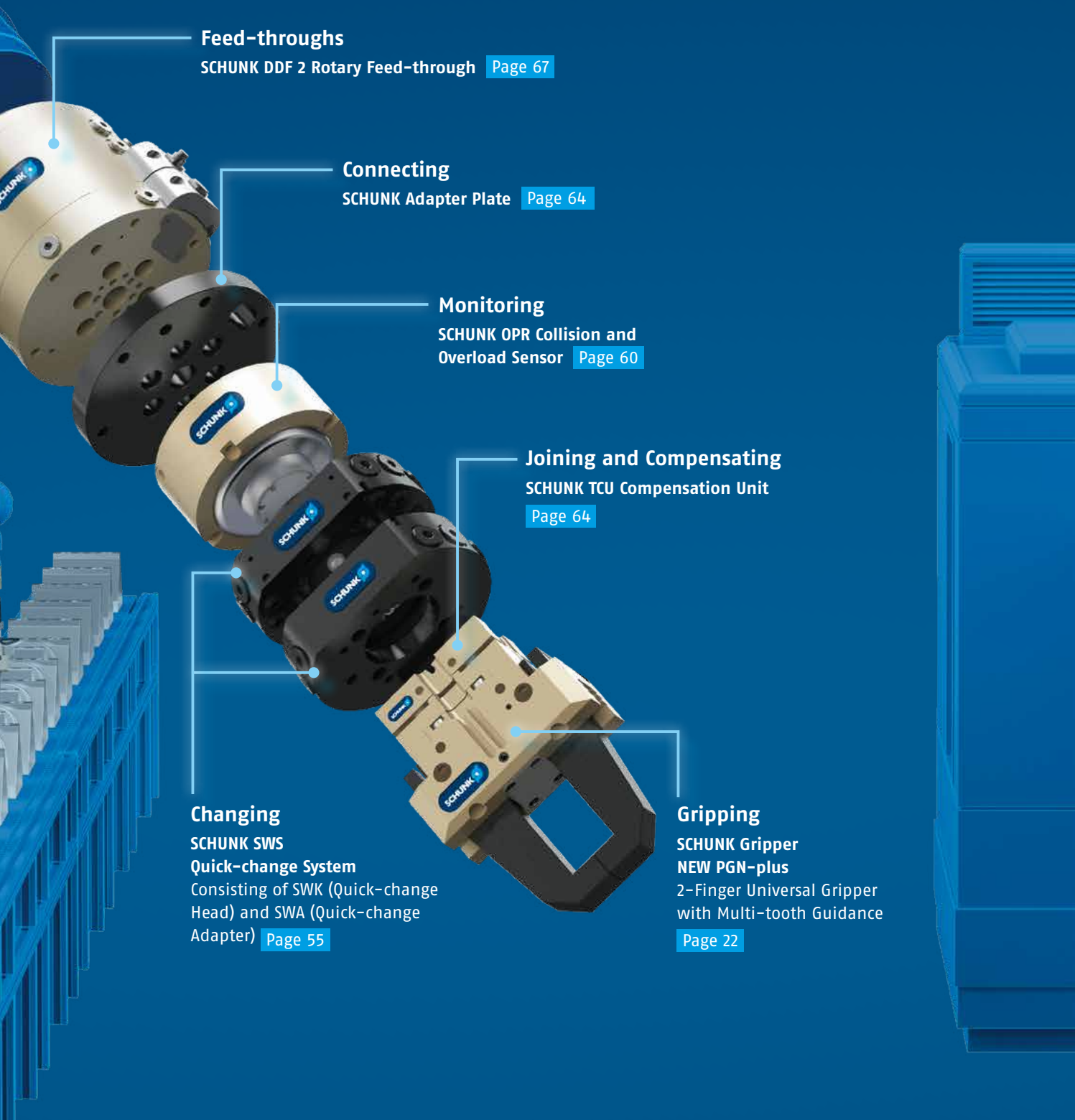
SCHUNK TCU Compensation Unit
[Page 64](#)

Changing

SCHUNK SWS
Quick-change System
Consisting of SWK (Quick-change
Head) and SWA (Quick-change
Adapter) [Page 55](#)

Gripping

SCHUNK Gripper
NEW PGN-plus
2-Finger Universal Gripper
with Multi-tooth Guidance
[Page 22](#)



... for your
SCARA Robot

Connecting

SCHUNK Adapter Plate [Page 64](#)

Measuring

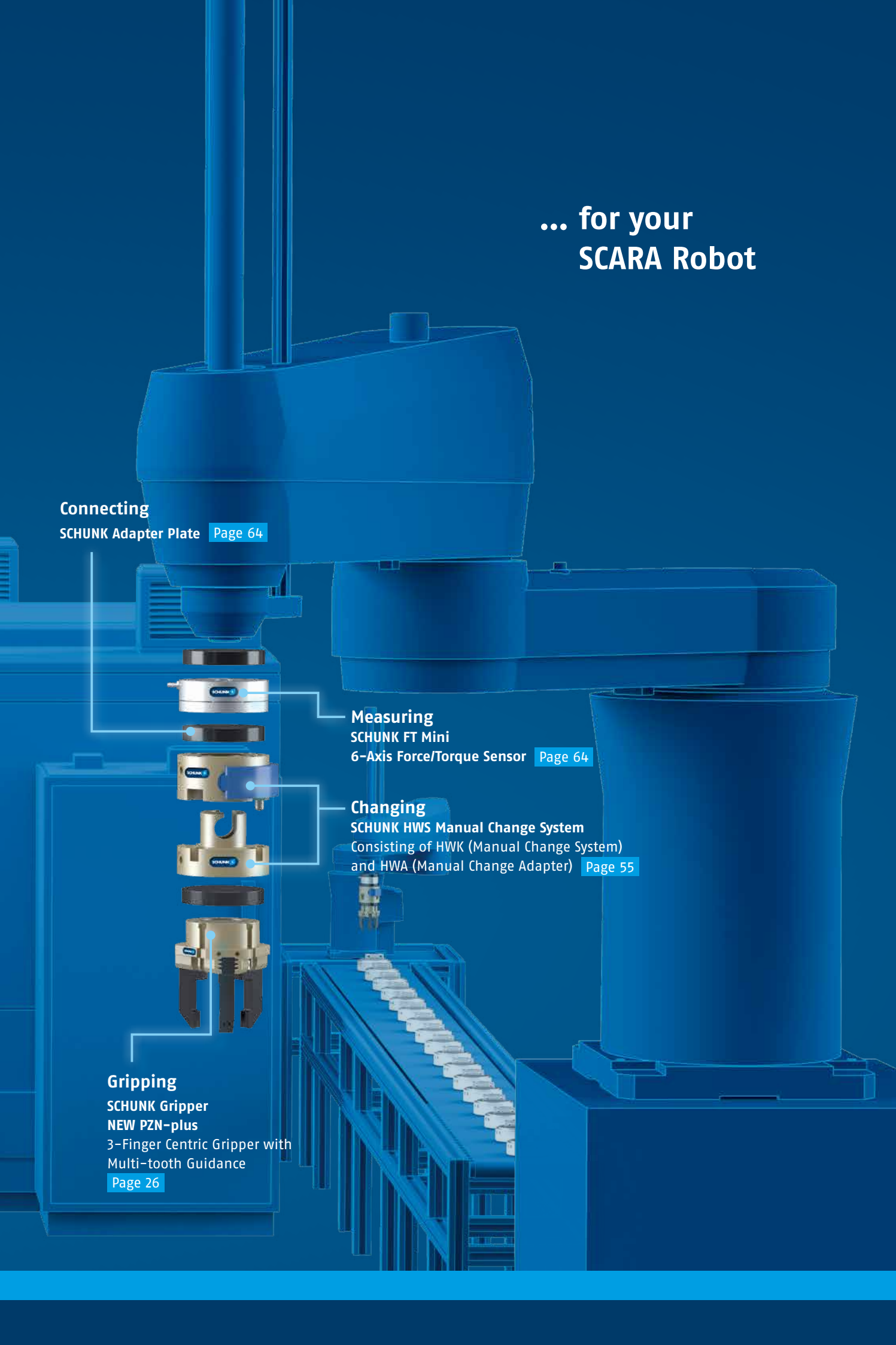
SCHUNK FT Mini
6-Axis Force/Torque Sensor [Page 64](#)

Changing

SCHUNK HWS Manual Change System
Consisting of HWK (Manual Change System)
and HWA (Manual Change Adapter) [Page 55](#)

Gripping

SCHUNK Gripper
NEW PZN-plus
3-Finger Centric Gripper with
Multi-tooth Guidance [Page 26](#)

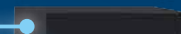


... for your Delta Robot



Changing
SCHUNK SWS Quick-change System
Page 55

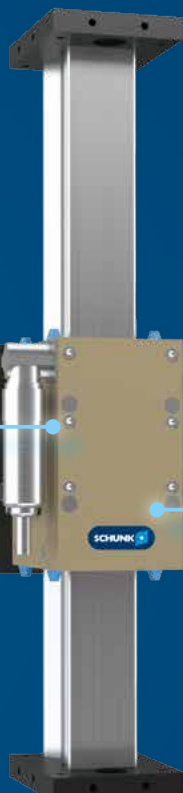
Connecting
SCHUNK Adapter Plate
Page 64



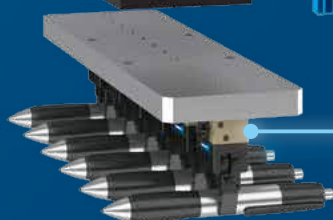
Gripping
SCHUNK MPG-plus Gripper
2-Finger Miniature Parallel Gripper
Page 66



Moving
SCHUNK LDN
Linear Axis
Page 65



Connecting
SCHUNK Adapter Plate
Page 64



Gripping
SCHUNK MPG-plus Gripper
2-Finger Miniature Parallel Gripper
Page 66

NEW

www.schunk.com

Informative, Fast, Intuitive.

The NEW SCHUNK website has arrived! With concentrated know-how and a modern design, it sets the benchmark with its high user friendliness and intuitive operation. On desktops, tablets or smartphones – allowing you to get easily oriented and find the suitable components for your project quickly. All the relevant, technical information, available up the variant level. You can find technical data and CAD files in 2D and 3D formats as well as application pictures and videos, catalogs, operating manuals and accessories.

In short: one extremely valuable click for you.



www.schunk.com

New Products

	Page
SCHUNK Grippers	22
PGN-plus 2-Finger Parallel Gripper	22
PGN-plus-Electric 2-Finger Parallel Gripper	24
PZN-plus 3-Finger Centric Gripper	26
EGL 2-Finger Parallel Gripper	28
SCHUNK eGRIP Finger Designer	30
Rotary Gripping Modules	32
EGS Rotary Gripping Unit	32
Rotary Modules	34
ERD Rotary Module	34
Linear Modules	36
ELP Linear Module	36
Modular Assembly Automation	38
Pillar Assembly System	38
Robot Accessories	40
AGI Compensation Unit	40
SHS Manual Change System	42
Accessories	44
SPS Functional Module for PPU-P and DRL	44

The NEW SCHUNK PGN-plus 2-Finger Parallel Gripper. The world-proven Gripper on the Market – Now with NEW Permanent Lubrication in the Multi-tooth Guidance. Lifelong maintenance-free* Guaranteed!

Improved multi-tooth guidance and new permanent lubrication

The NEW SCHUNK PGN-plus is raising the bar even higher for pneumatically powered universal grippers. The NEW SCHUNK PGN-plus has three new technical features bringing it to its top position. Firstly, improved multi-tooth guidance. By enlarging supporting dimensions between the six load-bearing shoulders of the patented multi-tooth guidance, higher moments can be accommodated and thus up to 50% longer fingers can be used. Secondly, permanent lubrication is provided via continuous lubrication pockets in the guidance. For short strokes in particular, the principle of minimum quantity lubrication ensures an especially quick and even distribution of the lubricant so that the gripper is maintenance-free under normal, clean ambient conditions.

Benefit from the advantages:

- up to **50%** longer gripper fingers
- up to **120%** higher finger load
- up to **50%** higher gripping force

Power right down to the fingertips

Thirdly, the NEW SCHUNK PGN-plus has an enlarged drive piston area, whereby gripping force is increased by up to 50%. The NEW SCHUNK PGN-plus benefits from a unique accessory program. Virtually the entire spectrum of conceivable automation applications can be mastered with process reliability using the universal modular gripper system. With the NEW PGN-plus, SCHUNK is underscoring its long-life functional warranty, robustness and reliability as well as precision in the μm range. In the first step, the new gripper benchmark is being introduced in sizes 50 to 125. Expansion to all existing PGN-plus unit sizes is planned.



The NEW SCHUNK PGN-plus Gripper!

Improved multi-tooth guidance with permanent lubrication, higher maximum moments and force.

* More than 50 million cycles under normal, clean operating conditions.

Available in size 64: from August 2016 | sizes 50, 80 - 175: from September/October 2016



Sizes
50 .. 125



Weight
0.17 kg .. 1.35 kg



Gripping force
160 N .. 2,780 N



Stroke per finger
2 mm .. 13 mm



Workpiece weight
0.8 kg .. 13.9 kg

Product features

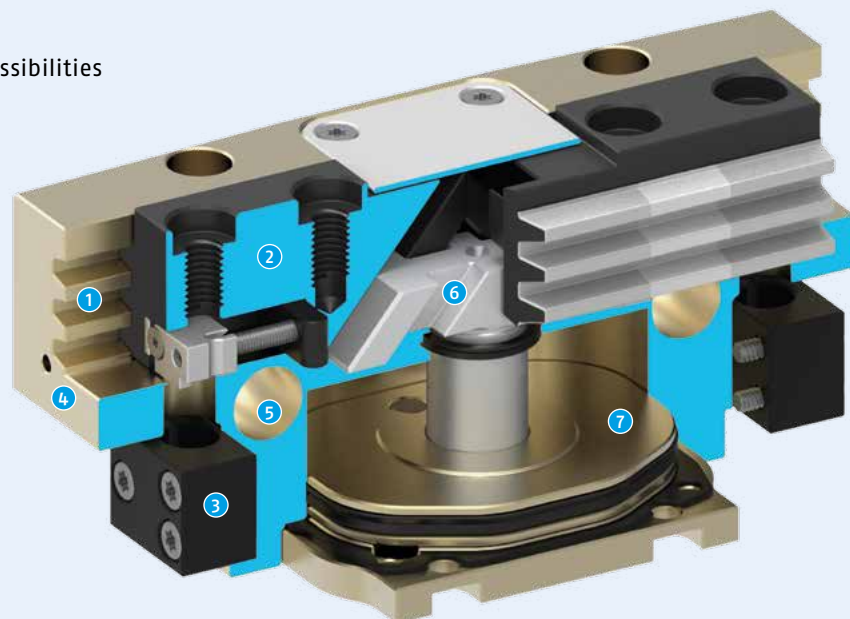
- Improved SCHUNK multi-tooth guidance with enlarged supporting dimension
- Increased moment and force absorption
- Lubricant pockets with flat lubricating wedge in the multi-tooth guidance
- Enlarged drive piston surface
- Improved degree of efficiency and wear reduction
- Precise repeat accuracy 0.01 mm

Your advantage

- Use of up to 50% longer gripper fingers – due to higher maximum moments
- Handling of higher workpiece weights through up to 50% increased gripping force
- Rapid and even lubricant distribution even with short strokes
- Reduced total cost of ownership (TCO)
- Permanently higher performance
- More compact, efficient systems
- Continuously reliable and robust

Function cross section

- 1 Multi-tooth guidance
- 2 Base jaw
- 3 Mounting for sensor
- 4 Housing
- 5 Centering and mounting possibilities
- 6 Wedge hook principle
- 7 Piston drive



The NEW SCHUNK PGN-plus-Electric Gripper. The First Simple Electric Gripper with Multi-tooth Guidance, Digital Actuation, and 24 V Drive.

Mechatronic universal genius

Due to the NEW SCHUNK PGN-plus-Electric, SCHUNK is transferring the service package for the NEW SCHUNK PGN-plus pneumatic universal gripper to the electrical handling area. Like its pneumatic role model, the NEW SCHUNK PGN-plus-Electric also has improved multi-tooth guidance for the accommodation of higher maximum moments, a continuous lubrication pocket in the guide contour, and the proven diagonal-pull kinematics with a high surface coverage in all stroke positions. The mechatronic universal gripper is powered by a brushless DC servo motor. Therefore, permanently high process stability and a long service life with minimal maintenance requirements are ensured. The NEW SCHUNK PGN-plus-Electric benefits from a unique accessory program. Virtually the entire spectrum of conceivable automation applications can be mastered with process reliability using the universal modular gripper system.

Fully integrated control and power electronics

The mechatronic universal gripper makes the switch from pneumatic to electric components particularly easy: it has an identical screw connection pattern to its pneumatic counterpart, and the 24-V gripper is easily controlled via digital I/O. Up to two gripping positions can also be monitored by means of an additional M8 standard connection. The required control and power electronics are already completely integrated into the compact module, so that no space is taken up in the control cabinet. Neither extensive mechatronic know-how nor additional programming are necessary for commissioning. The gripping force of the NEW SCHUNK PGN-plus-Electric can be adjusted in four stages. The gripper will initially be available in size 80. Other sizes are planned.

Benefit from the advantages:

- up to **50%**
longer gripper fingers
- up to **120%**
higher finger load
- **easy digital actuation and gripping force adjustment**



The NEW SCHUNK PGN-plus-Electric Gripper!

Proven multi-tooth guidance with permanent lubrication, higher maximum moments and adjustable gripping force.

Available from September 2016

				
Size 80	Weight 1.01 kg	Gripping force up to 570 N	Stroke per finger 8 mm	Workpiece weight up to 3.0 kg

Product features

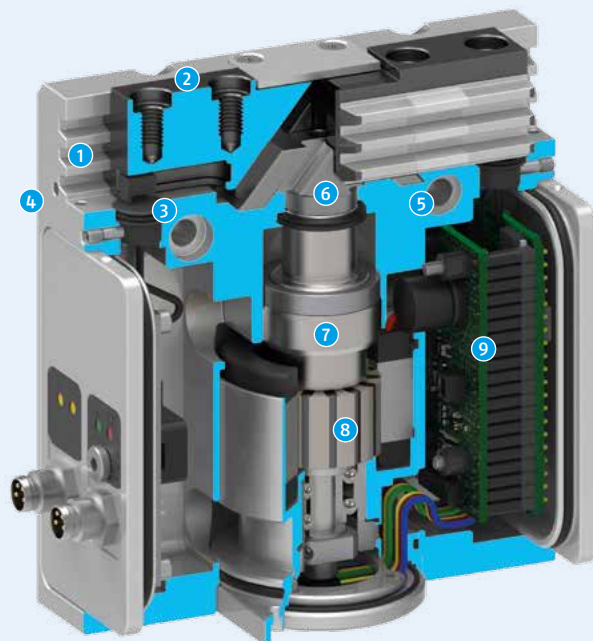
- Fully integrated control and power electronics
- The gripping force can be adjusted over four stages
- Improved SCHUNK multi-tooth guidance with enlarged supporting dimension
- Increased moment and force absorption
- Lubricant pockets with flat lubricating wedge in the multi-tooth guidance
- Brushless DC servomotor
- Proven diagonal pull kinematics with higher surface coverage in the end positions
- Improved degree of efficiency and wear reduction
- Precise repeat accuracy 0.01 mm

Your advantage

- Easy commissioning and rapid integration into existing systems
- Use of up to 50% longer gripper fingers due to higher maximum moments
- More space in the control cabinet as an external controller is no longer needed
- Handling of higher workpiece weights through up to 50% increased gripping force
- Rapid and even lubricant distribution even with short strokes
- Reduced total cost of ownership (TCO)
- More compact, efficient systems

Function cross section

- 1 Multi-tooth guidance
- 2 Base jaw
- 3 Sensor system
- 4 Housing
- 5 Centering and mounting possibilities
- 6 Wedge hook principle
- 7 Spindle nut
- 8 Drive
- 9 Electronic control unit



The NEW PZN-plus 3-Finger Centric Gripper. Now NEW with Permanent Lubrication in the Multi-tooth Guidance. Lifelong maintenance-free.* Guaranteed!

New benchmark with centric grippers

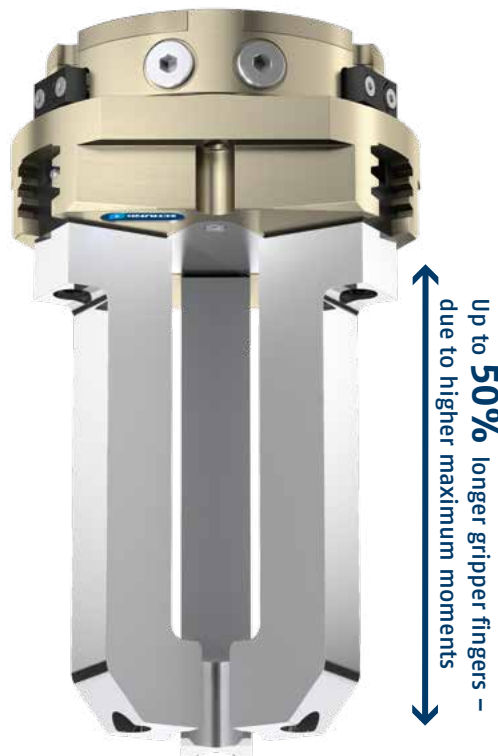
The NEW SCHUNK PZN-plus centric gripper is now also equipped with a permanent lubrication unit in the multi-tooth guidance which, under normal, clean working conditions, ensures lifelong maintenance-free operation. With short strokes in particular, the continuous lubricant pockets produce an especially fast and even distribution of lubricant along the entire multi-tooth guidance contour. As with the NEW PGN-plus, the supporting dimensions between the six load-bearing shoulders of the patented multi-tooth guidance have been enlarged, so that higher moment can be accommodated and longer fingers can be used. In order to ensure a perfect accuracy of fit, each individual base jaw is carefully ground manually and fitted to its housing individually. In addition, the large piston drive area produces maximum gripping force. Compared with conventional T-slot guided centric grippers, the new SCHUNK PZN-plus enables up to 50% longer gripper fingers and a finger load up to 120% higher.

Comprehensive accessories

As part of the universal SCHUNK gripper module, the NEW SCHUNK PZN-plus centric grippers benefit from a range of accessories that is unique in its scope. Virtually the entire spectrum of conceivable automation applications can be achieved in a reliable process, from machine and system loading in the machining industry and foundries through to assembly applications in the automotive and electrical industries as well as to sensitive handling tasks in medical technology and the pharmaceutical industry. The universal grippers are equally well-suited for use in areas with high temperatures, contamination, aggressive media, as well as for clean rooms. Optionally, the energy supply can be connected with screws or by using a hose-free direct connection.

Benefit from the advantages:

- up to **50%** longer gripper fingers
- up to **120%** higher finger load
- up to **50%** higher gripping force



The NEW SCHUNK PZN-plus Gripper!

Improved multi-tooth guidance with permanent lubrication, higher maximum moments and force.

* More than 50 million cycles under normal, clean operating conditions.

Available from April 2017



Sizes
50 .. 125



Weight
0.27 kg .. 3.34 kg



Gripping force
325 N .. 8,450 N



Stroke per finger
2 mm .. 13 mm



Workpiece weight
1.65 kg .. 29 kg

Product features

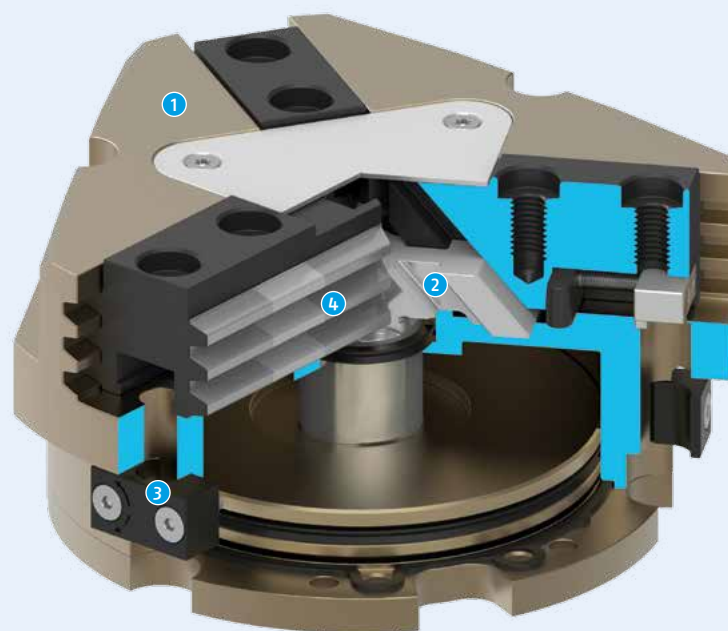
- Improved SCHUNK multi-tooth guidance with enlarged supporting dimension
- Increased moment and force absorption
- Lubricant pockets with flat lubricating wedge in the multi-tooth guidance
- Enlarged drive piston surface
- Improved degree of efficiency and wear reduction
- Precise repeat accuracy 0.01 mm

Your advantage

- Use of up to 50% longer gripper fingers – due to higher maximum moments
- Handling of higher workpiece weights through up to 50% increased gripping force
- Rapid and even lubricant distribution even with short strokes
- Reduced total cost of ownership (TCO)
- Permanently higher performance
- More compact, efficient systems
- Continuously reliable and robust

Function cross section

- 1 Housing
- 2 Wedge hook principle
- 3 Sensor system
- 4 Multi-tooth guidance



EGL 90 2-Finger Parallel Gripper. Intelligent Powerhouse for Handling and Assembly.

Optimal combination of power and intelligence

The SCHUNK EGL 90 2-finger parallel gripper, with a variable gripping force between 50 and 600 N is one of the most powerful and flexible mechatronic grippers on the market. Since the finger position, closing speed, and gripping force are freely programmable within a maximum stroke of 42.5 mm per finger, diverse components up to 3 kg can be precisely handled and are force-fit gripped. The gripper fingers can be prepositioned to reduce cycle times. A brushless servomotor ensures continuous and reliable operation with no maintenance required. To maintain the position in the event of a power outage the gripper features an electrically operated brake.

Fast commissioning

The entire control and power electronics of the EGL 90 are integrated to save space and to allow decentral operation and even mobile use, due to the 24 V DC operating voltage. Standard Profibus DP and CAN bus interfaces allow fast and easy integration in higher level system controllers. The gripper also features a USB-port as a service interface. Since the EGL 90 fulfills industrial standards and the basic version is connected only by means of industrial connectors, installation time is reduced to a minimum.



Highly flexible!
Intelligent powerhouse with variable gripping force adjustment.

Immediately available



Size
90



Weight
1.8 kg



Gripping force
50 N .. 600 N



Stroke per finger
42.5 mm



Workpiece weight
3 kg

Product features

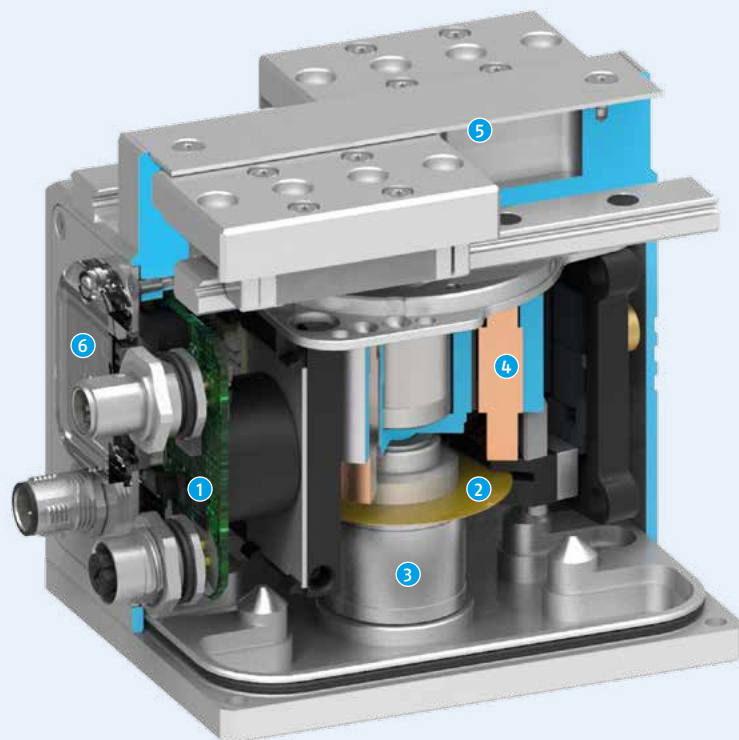
- Freely programmable finger position, closing speed, and gripping force
- Pre-positionable gripper fingers
- Completely integrated control and power electronics
- 24 V DC operating voltage
- Mobile use possible
- Standard interfaces Profibus DP and CAN bus
- Service interface with USB-port
- Brushless servomotor

Your advantage

- Fast and easy integration in higher level system controllers
- Long-term reliable operation with no maintenance costs
- Reduced assembly time due to industrial standards

Function cross section

- 1 Control electronics
- 2 Encoder
- 3 Electric brake
- 4 Drive
- 5 Kinematics
- 6 Service window



SCHUNK Finger Designer eGRIP

SCHUNK Finger Designer

Individual Gripper Fingers at the Press of a Button – Now also in Aluminum and Steel.

Lightweight design included

With its web-based 3D design tool SCHUNK eGRIP, in addition to individual gripper fingers made of polyamide, it is now also possible to design and order additive manufactured fingers made of aluminum and steel in less than 15 minutes. After entering just a few details and uploading the workpiece data as a STEP or STL file, the SCHUNK eGRIP license-free online tool has enough information to calculate individual gripper fingers with optimum 3D contour and to create a detailed offer with price and delivery time within seconds. To reduce the weight at the tool center point, the aluminum and steel fingers include a standard integrated grid structure. Compared to conventionally manufactured gripper fingers, this allows for a weight savings of between 10 and 50%. The effects are clearly noticeable, especially with steel. Using a volume-based price model, SCHUNK can pass on the cost benefits of additive manufacturing for aluminum and steel to the consumer: the smaller the finger, the more affordable the price.

Innovative ordering process

New to the ordering process: the automatically saved offer can be retrieved at a later point in time, further edited or requested via e-mail by using the configuration number. The external contour of the generated modules, consisting of gripper, top jaws and workpiece, can also be downloaded free of charge as an STL file and used directly for the construction of the system. Follow-up orders are just as easy: any orders that are made can be activated again or adjusted at any time.

www.egrip.schunk.com



Pneumatic
SCHUNK gripper
NEW PGN-plus

Integrated Lightweight Design!
Weight reduction with metal fingers of up to 50%.

Immediately available



Available for SCHUNK

PGN-plus 40 .. 125

MPG-plus 20 .. 64

EGP 25 .. 50

Product features

- Additive manufacturing method
- Materials: polyamide 12 (PA 2200 or 2201), aluminum (AlSi10Mg), steel (1.4404)
- Metal finger able to be configured and manufactured with high rigidity
- Design and ordering time under 15 minutes
- Quick availability

Your advantage

- The manufacture of gripper finger contours that are otherwise impossible or time-consuming to achieve with conventional machining
- Less expenditure of force and no clamp marks due to form-fit clamping
- Simple and fast design and production of fingers for complex workpieces
- Weight and volume reduction of up to 50% due to automatic savings in materials due to the grid structures in the design

Gripper finger material design

- 1 Steel and aluminum
- 2 Black polyamide
- 3 White polyamide



EGS Rotary Gripping Unit.

The world's most compact electric Rotary Gripping Unit.

The new efficiency class in small component handling

The SCHUNK EGS electric rotary gripping unit makes the switch to pneumatic handling solutions easy. It is the first unit to combine electric gripping and rotation in a single compact housing. The low-maintenance and attractively priced module paves the way for highly efficient pneumatic-free systems. Coupling of the gripping and rotation gear, patented by SCHUNK, allows continuous rotation without an electric feed-through. The module is equipped with stationary, brushless and therefore wear-free 24 V DC motors. It requires no moving cables, slip rings or shock absorbers, which increases the process stability and availability of assembly systems.

Extremely easy commissioning

Both the angle of rotation and the gripping force can be adjusted independently of each other directly at the module. Monitoring is possible via inductive proximity switches. The module is controlled directly/digitally or via a fieldbus distributor. The entire control and power electronics for decentral control of the motors are integrated directly in the module. This eliminates the need for external controllers and additional programming. The SCHUNK EGS features a torque of 0.04 Nm and a freely definable angle of rotation between 40° and 290°. The gripping force is 30 N, the stroke/jaw 3 mm. The swiveling time is 0.18 s/180° and the gripping time is 0.05 s/stroke.



product
design
award



Fast!

The swiveling time amounts to 0.18 s/180°, gripping time is 0.05 s/stroke.

Available from September 2016



Size
25



Gripping force
30 N



Stroke per jaw
3 mm



Torque
0.04 Nm



Workpiece weight
0.15 kg

Product features

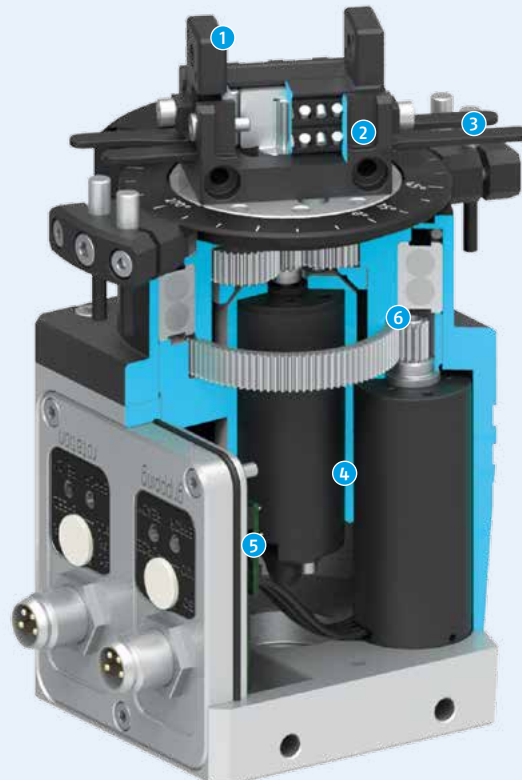
- Small dimensions of 58 mm x 45 mm x 89 mm
- Backlash-free pre-loaded junction roller guides for high-precision gripping and virtually constant gripping forces over the entire finger length
- Swiveling time 0.18 s/180°
- Gripping time 0.05 s/stroke
- Freely definable angle of rotation between 40° and 290°
- Brushless 24 V DC motors
- 4 digital inputs (open gripper, close gripper, rotate left, rotate right)
- Controlled with 24 V

Your advantage

- Fast conversion to pneumatic-free handling
- Convenient configuration without external controllers and additional programming
- Gripping and rotating with one extremely compact module
- Easy, fast commissioning

Function cross section

- 1 Base jaw
- 2 Junction roller guide
- 3 Monitoring
- 4 Drives
- 5 Control electronics
- 6 Patented gear coupling



ERD Rotary Module. The only Torque Motor with integrated Air Feed-through and Absolute Stroke Measuring System on the Market.

Complete module SIL 2-certified

The SCHUNK ERD rotary module is the first endlessly rotating and SIL 2-certified miniature module especially designed for assembly applications in the electronics, consumer goods and pharmaceuticals industries. It is equipped with two integrated air feed-throughs, four electrical feed-throughs, and a SIL 2-certified absolute stroke measuring system. The module makes it possible to implement space-saving, high-torque, high-speed assembly systems that even meet the demanding requirements of the new machinery directives. The rotary module is driven by a brushless synchronous motor with permanent excitation.

Time saving on system restart

Its special geometry ensures high dynamic properties and acceleration. In addition, pneumatic actuators connected to it can be actuated faster because of the optimized air feed-throughs. Both factors taken together ensure short cycle times and high productivity. The absolute-value transducer means that there is no need for time-consuming reference runs either when starting up or after an emergency off; furthermore, the repeat accuracy, specified as 0.01°, also benefits. A large number of pole pairings in the module ensures that it generates a high rated torque of up to 1.2 Nm even at low RPM values. The module has a long service life because it contains hardly any wearing parts.



With absolute stroke measuring system!
Use in functional safety areas up to SIL 2.

Immediately available



Sizes
04 .. 12



Nominal torques
0.4 Nm .. 1.2 Nm



Repeat accuracy
0.01°



Air feed-through
2



Electrical feed-through
4

Product features

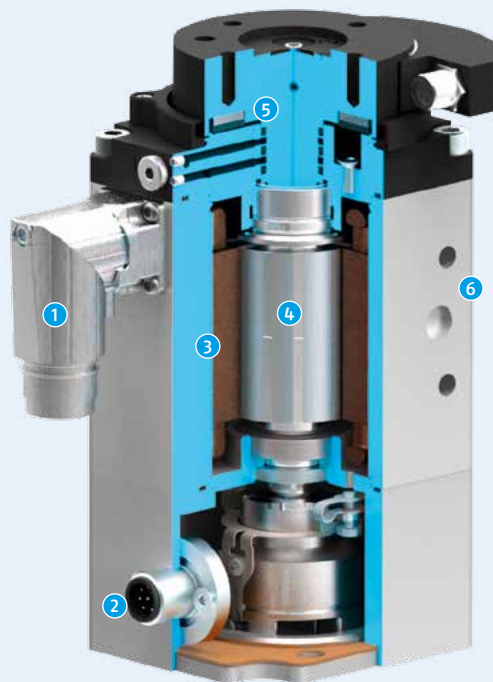
- Endlessly rotating miniature module
- SIL 2-certified
- Absolute stroke measuring system with SIL 2-certification
- Pneumatic and electrical feed-throughs
- Brushless synchronous motor with permanent excitation
- Large number of pole pairings
- Bosch-Rexroth IndraDrive CS or IndraDrive Advanced drive control units
- Optionally available in protection classes IP40 or IP54

Your advantage

- High acceleration due to special motor geometry
- Shortest cycle times due to high dynamics
- No reference runs when starting up the system or after emergency stop situations due to an absolute stroke measuring system
- Faster actuation of the actuator in high-speed applications because of optimized air feed-throughs

Function cross section

- 1 Motor connector
- 2 Absolute-value transducer connection plug
- 3 Primary part
- 4 Secondary part
- 5 Air and electrical feed-throughs
- 6 Screw connection



ELP Linear Module. The easiest electric Linear Module on the Market to adjust.

Easy commissioning in only two steps

The SCHUNK ELP linear module is the new technological benchmark for use in modular assembly. Ready for operation in only two work steps. All you need to do is to adjust the end positions mechanically with a screw and the speed of extension and retraction using rotary switches on the side. The SCHUNK ELP features an auto-learn function which allows the speed to be automatically configured according to the add-on weight. In this way, incorrect configurations can be compensated for. Since the low-maintenance 24 V linear direct drive also automatically regulates the brake process, there is no need for shock absorbers. What are the benefits you ask? The SCHUNK ELP is practically wear-free and is therefore robust, with a long service life. You do not have to worry about adjusting of any shock absorbers.

Compact and convenient

The control and power electronics are directly integrated into the module, so you can configure the SCHUNK ELP without any external controllers or additional programming, making it much easier for you. The module can be decentrically controlled via a fieldbus distributor or simply via digital signals just like with pneumatic valves, which doesn't require any know-how in mechatronics. The highly flexible SCHUNK ELP boasts repeat accuracy of ± 0.01 mm, making it ideal for assembly automation demanding high precision. The module makes it easy to change from pneumatic to mechatronic components.



Unique auto-learn Function!
Speed adjustment in 2 to 5 strokes.

Available from July 2016



Sizes
25 .. 100



Weight
1.8 .. 8.3 kg



Stroke
30 .. 200 mm



Rated force
17 .. 104 N



Repeat accuracy
 ± 0.01 mm

Product features

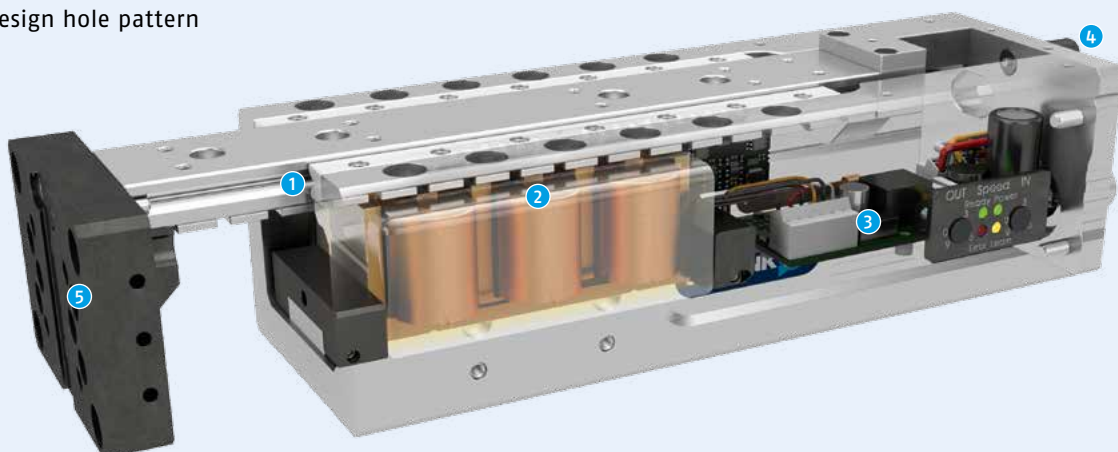
- Repeat accuracy ± 0.01 mm
- Low-maintenance 24 V linear motor drive
- Mechanical end position adjustment
- Adjusting speed of extension and retraction using rotary switches
- Drive and control with auto-learn function completely integrated into module
- Control via fieldbus distributor or digital I/O

Your advantage

- Fewer wearing parts and longer maintenance intervals as there are no hydraulic shock absorbers
- Reduction of commissioning expenditure due to automatic speed settings
- High load handling and end position precision in all assembly positions due to play-free junction roller guides

Function cross section

- 1 Roller guide
- 2 Drive
- 3 Electronic control unit
- 4 Connecting plug
- 5 Modular design hole pattern



New modules for the SCHUNK Pillar Assembly System. Greater Flexibility and simple Adjustment of the Handling Units.

More than 10,000 possible combinations

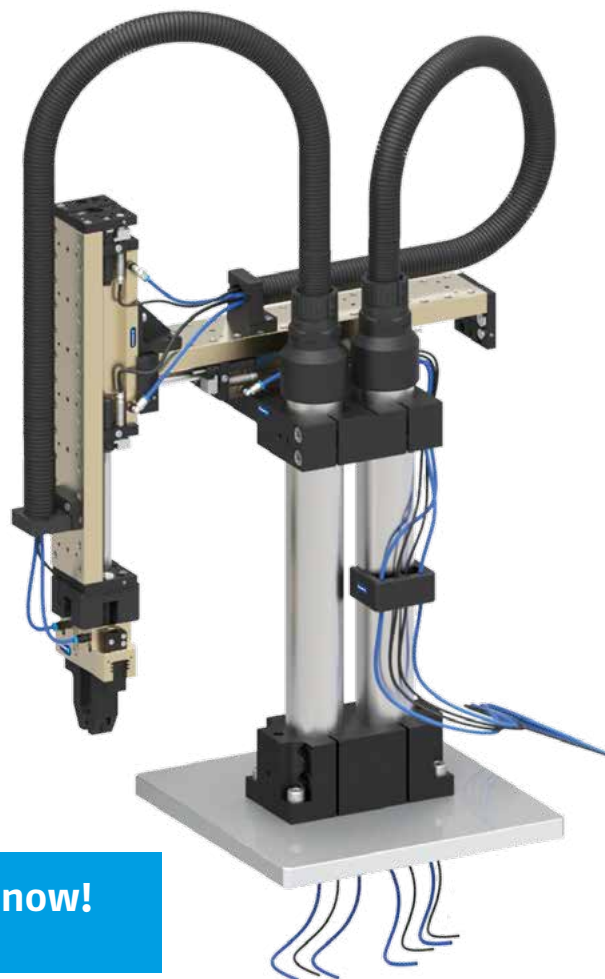
SCHUNK offers the most extensive range of modules in the world for high-performance assembly. The heart of the design is the pillar assembly system that is unique in scope with numerous standardized pillar profiles, adapter plates, centering and connection elements. New assembly sections and innovative media routing now expand the possible applications of the system. With the new modules in the SCHUNK pillar assembly system, it is now possible to achieve complete ranges more cost effectively and economically without sacrificing flexibility and precision.

Quick and easy media routing from the modular system

By integrating various standard elements into the modular system, SCHUNK now offers all media routing possibilities. For one thing, hoses and cables can be routed directly through the pillar. For another, these can be clipped onto the pillars in a time-saving and reliable process.

More versatile and more economical

The SCHUNK APEA mounting plate allows compact structures even directly above a single pillar. The SCHUNK AMEH/AMDH and SCHUNK AMEV/AMDV mounting plates, for their part, extend the already highly versatile range of combination options in the modular system. In the SCHUNK AMEH/AMDH, the mounting surface is arranged horizontally and at right angles to the pillar. In the SCHUNK AMEV/AMDV, the mounting surface is vertical and thus arranged parallel to the pillar. The SCHUNK STG split set collar which facilitates the complete assembly is also new. Fitted below the elements, it can be used for fine positioning of the height of the elements by means of screws. The set collar is in two pieces and can be reused for other positions afterwards. All elements are equipped with additional threads to make the assembly more versatile. This means brackets, cable ducts or those clamps can be attached during set-up.



Even more economic now!
Modules for greater flexibility.

Immediately available



Pillar diameter
20 .. 55 mm



Number of module elements
19

Product features structural element

- Depending on the assembly element, the assembly could be easily expanded in parallel, orthogonal or directly above the pillars
- Ground and hard-chromium plated steel pillars
- Precise shape and positional tolerances
- Three pillar diameters \varnothing 20, 35, and 55 mm
- Assembly and centering holes for simple and precise fitting exchange
- Additional thread for mounting further elements such as brackets, cable ducts or hose clamps

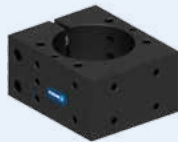
Product features media routing

- Simple and ingenious system for handling modules
- For pillar diameters \varnothing 35 and 55 mm

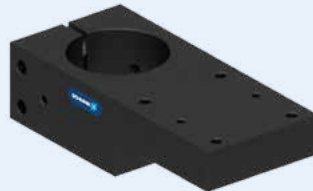
STG



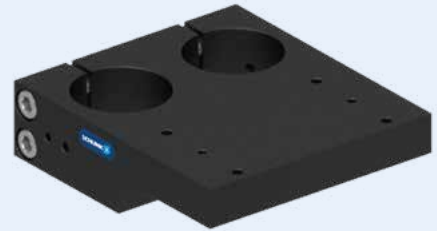
APEH



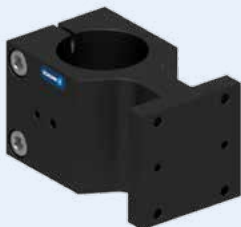
AMEH



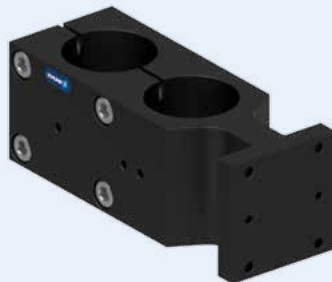
AMDH



AMEV



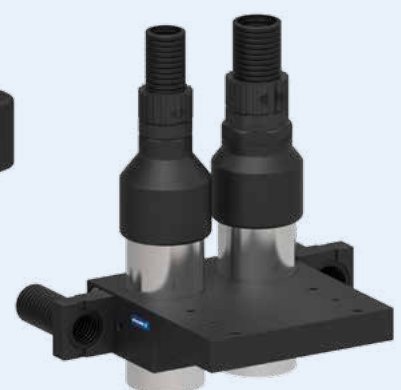
AMDV



Media routing



Media routing



AGI Compensation Unit. The world's first intelligent and sensitive Compensation Unit with Power Control.

Constant process force at the front end

With its integrated real-time power control, the SCHUNK AGI sensitive compensation unit defines a new benchmark in SCHUNK's robot accessory range. It gives robots and axial systems a precise tactile sense at the front end. Without having to adjust or perform detailed programming regarding the traverse path, the intelligent module ensures the previously defined power directly upon contact with the workpiece. As regulation is decentralized without the involvement of the system control, high traverse speeds along a workpiece contour are possible. Here, the defined parameters are adhered to precisely and the maximum value is never exceeded. There is consistent compensation for workpiece tolerances or positions. Furthermore, serial gravitation compensation makes sure that the precise function is guaranteed even if the orientation changes.

Reduction in cycle time

The SCHUNK AGI minimizes the programming effort, prevents damage to the tool or the workpiece and can bring about considerable savings in the cycle time. Whether you are glueing, assembling, inserting, depositing or stacking, the module often pays for itself within a very short period of time. It is even possible to handle sensitive parts operating at maximum performance. It can be used with all standard robots. Communication is via Ethernet TCP, Profinet, analog I/O, CAN bus, Ethernet XML, Modbus TCP or Profibus are also possible.



In real time!

Constant process force ensured at the first go.

Available from the 4th quarter of 2016

	F	F_{min}	S 	IP
Sizes	Forces	Minimal power	Compensation stroke	IP protection class
111-01	3 N .. 100 N	3 N	11.5 mm	65
111-04	6 N .. 200 N	6 N	35.5 mm	65
131-10	24 N .. 800 N	24 N	98 mm	65

Product features

- Combined pneumatic and electrical drive
- Power-controlled flexibility
- Permanent power control
- Integrated gravitation compensation
- Communication via all conventional bus systems such as Ethernet TCP/IP or Profinet

Your advantage

- Handling sensitive workpieces such as those made of glass
- Significantly easier programming of robots and gantry axes due to workpiece contact signal
- Reduction of programming work with different applications
- Higher flexibility with workpiece tolerances

Function overview

- 1 Protective sleeve for up to IP65
- 2 Compensation stroke
- 3 ISO flange pattern for end effectors
- 4 ISO flange pattern for easy mounting to robots



SHS Manual Change System. With integrated Monitoring of Locking and Presence Control.

Manual changing system with extensive equipment

The SCHUNK SHS quick-change system sets a new standard for manually operable tool changers for robots. It has a space-saving locking mechanism and offers numerous possibilities for the feed-through of air, vacuum, and signals. A large number of air feed-throughs in relation to the size, which can be connected both axially and radially, opens up ample leeway in system planning. Large cross-sections also ensure a high air flow and quick actuation of the actuators. In the process, special gaskets ensure a seal that is so tight that the system can also be used for the connection of a vacuum.

Extensive line of options

The SCHUNK SHS can be optionally equipped with an integrated tool presence control and a locking query. Various electrical feed-throughs from the SCHUNK standard program can be connected for the delivery of signals to the modules by means of a flange provide as standard equipment. The non-corrosive manual changing system is available in six sizes (40 to 125) with four to 12 air feed-throughs. It is equipped with hole patterns for S10 flanges for simple assembly on the robot arm. SCHUNK has expanded its portfolio for quick-change tools with this series.



Robust!

Non-corrosive lock bolt and with ISO flange pattern.

Available from the 4th quarter of 2016



Sizes
40 .. 125



Handling weight
up to 75 kg



Moment loading
up to 320 Nm



Air feed-throughs
4 .. 12



Repeat accuracy
< 0.02 mm

Product features

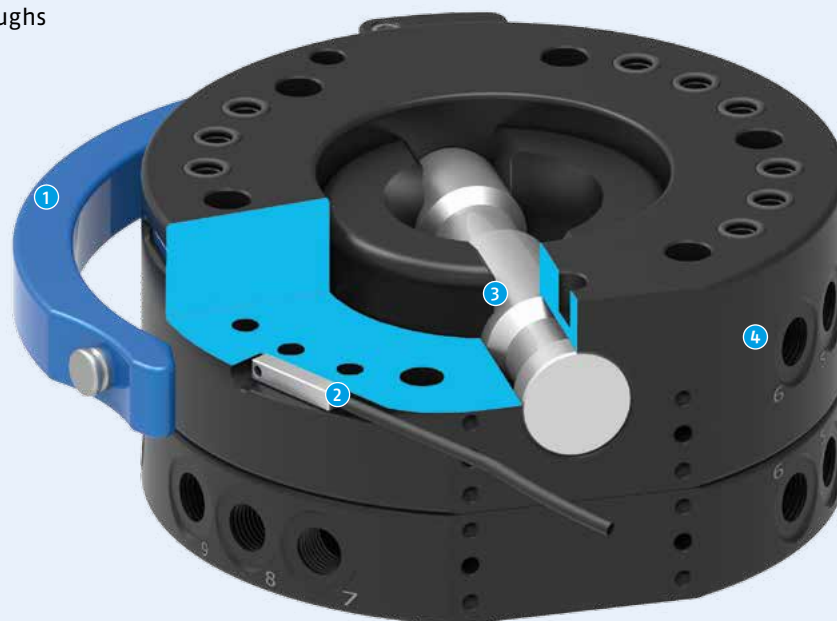
- Integrated monitoring of locking and presence monitoring
- Integrated air feed-throughs
- Non-corrosive as standard
- ISO flange pattern

Your advantage

- Feeding through of compressed air and vacuum possible with special gaskets
- Comfortable operation even in the most constrained spaces with hinged locking lever

Functional cross section

- 1 Hand lever for intuitive locking and unlocking
- 2 Integrated lock monitoring
- 3 Non-corrosive lock bolts
- 4 Integrated air feed-throughs



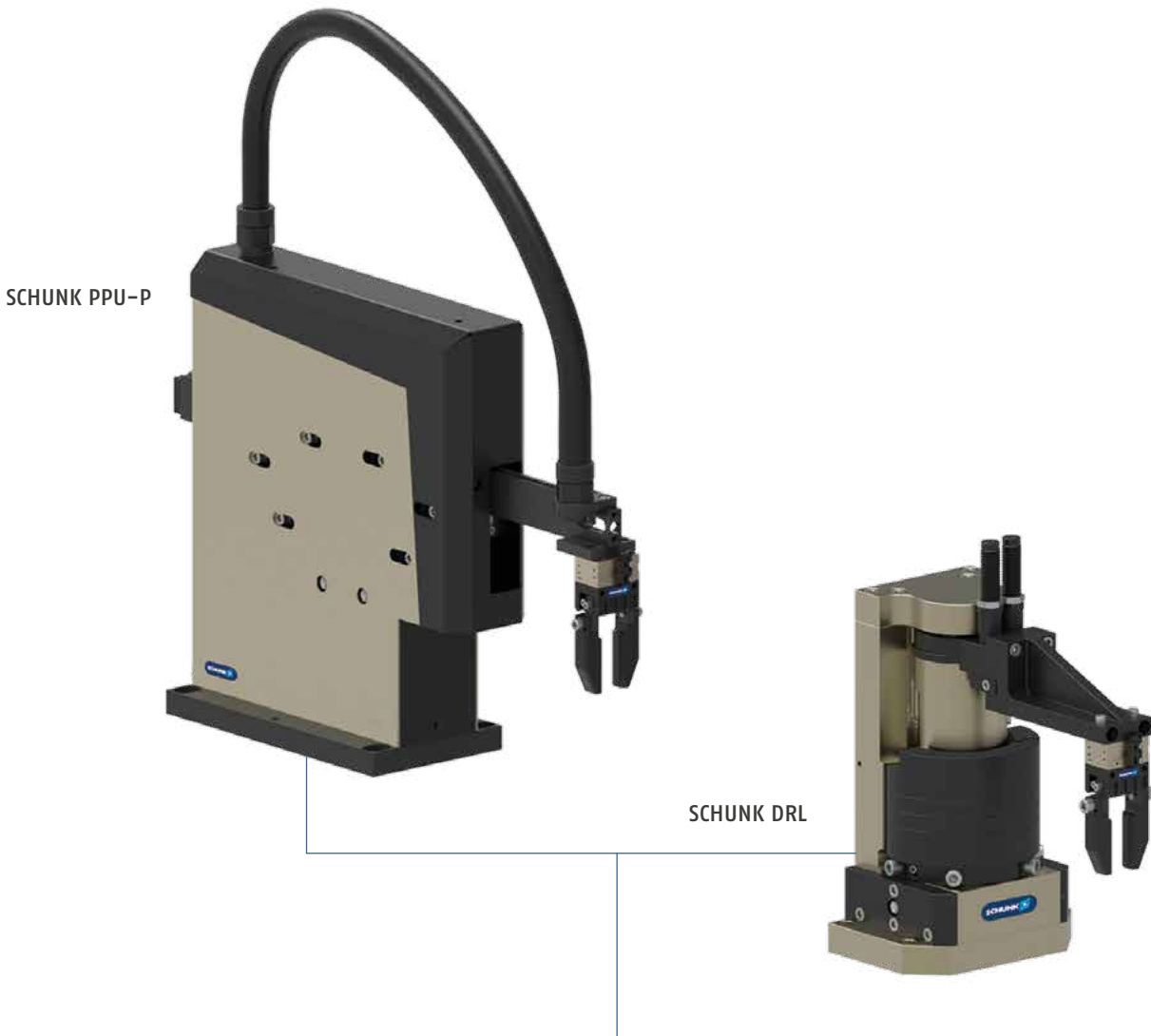
PLC Functional Component for PPU-P and DRL. The First Neutral PLC Functional Component for Pneumatic Pick & Place Modules.

For all conventional PLC software

In the electronics, medical technology and consumer goods assembly fields, the SCHUNK PPU-P and SCHUNK DRL pneumatically controlled high-performance assembly units are seen as the benchmarks for highly dynamic pick & place operations. To make their commissioning even more convenient, a neutral PLC functional module for simplified control has now been developed, with which the sequential program can be integrated in almost every standard PLC software.

Versatile adaptability

With minimal effort, the sequence that has been pre-configured in the preset can be expanded or adjusted flexibly based on the individual application. This eliminates the need for basic modeling of the process. The inputs for the sensor signals and the outputs for the valve signals are also pre-defined and only require assigning. The tool runs under CODESYS version 2.11/Service Pack 9 or the TwinCat System Control v2.11.0. Additional variants are planned.



More convenient!
Easier actuation and commissioning.



Immediately available



Available for SCHUNK
PPU-P
DRL

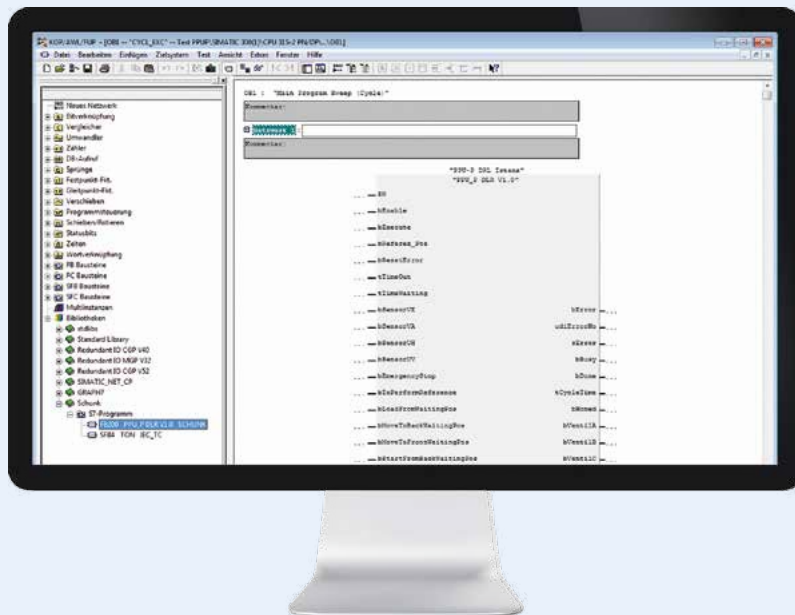
Product features

- Available in neutral data formats
- Preset example process with all of the basic functionalities, which can be adjusted individually
- Inputs for all sensor signals and outputs for valve signals are defined

Your advantage

- Eliminates manual programming of the program process, as an example process has been preset
- Versatile adaptability to customer applications
- Easy connection of the control unit to the sensor and valve signals

Program section from the PLC software



Superior Clamping and Gripping

It's time to use your machine's

With superior components, find potentials in your machine, where you would least expect to find them.

**Make full use of your machine's potential –
with the extensive product portfolio from SCHUNK.**

SCHUNK, the competence leader for clamping technology and gripping systems, can now open up the full potential of your processing machines and production processes. Reduce costs by combining accurate, flexible workpiece machining with dynamic production automation.

SCHUNK Synergy – when everything fits together.

With SCHUNK Synergy, you benefit from superior components from our innovative family-owned company and the result of a perfectly harmonized interplay of clamping technology and gripping systems. The more SCHUNK, the more efficient it is.

full potential!



"Clamping technology and gripping systems – the perfectly adjusted interplay makes you a champion in terms of productivity. We call it SCHUNK Synergy.

Let's have a look where the potentials in your machines are hidden."

J. Lehmann
Jens Lehmann

SCHUNK No. 1 Products for higher Productivity ...



Discover new potential now:

www.gb.schunk.com/machine-potential

And order the SCHUNK Synergy poster by telephone +49-7133-103-2256

... in your Automated Handling System



up to **20 tons** load handling

MAGNOS Magnetic lifting technology

... in your Lathe

... in your Lathe

60 seconds jaw change

Lathe chucks **ROTA-S plus 2.0** and **ROTA THW plus**



300% better surface quality

TLEINDLO^{TRON} – innovative hydraulic expansion toolholders, for lathes and turning/milling centers



1,200 standard chuck jaws

The world's largest chuck jaw program for every chuck type



... in your Automated Handling System



No. 1 unique

The **NEW PGN-plus**, the world-proven gripper on the market – Now **NEW** with permanent lubrication in the multi-tooth guidance



more **500** standard combinations

for **line and room gantries** from the modular system

100% cycle increase

Universal rotary module **SRU-plus 20-S**, the new benchmark in top performance



90% faster gripper change

SWS Quick-change system – fully automatic gripper change within seconds



... for your Automated Machine Loading

... for your Automated Machine Loading

... in your Machining Center



300 kg load capacity

NSR-A Robot coupling for pallet handling – space-saving and extremely flexible

100% control

TANDEM KSP plus Clamping force block with jaw monitoring



30% more productivity

Automated machine loading with the **NEW SCHUNK Gripper PGN-plus** with **GSW Spindle interface**

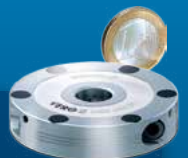


90% less set-up costs

with **VEROS**, due to set-up during processing time

20 mm height

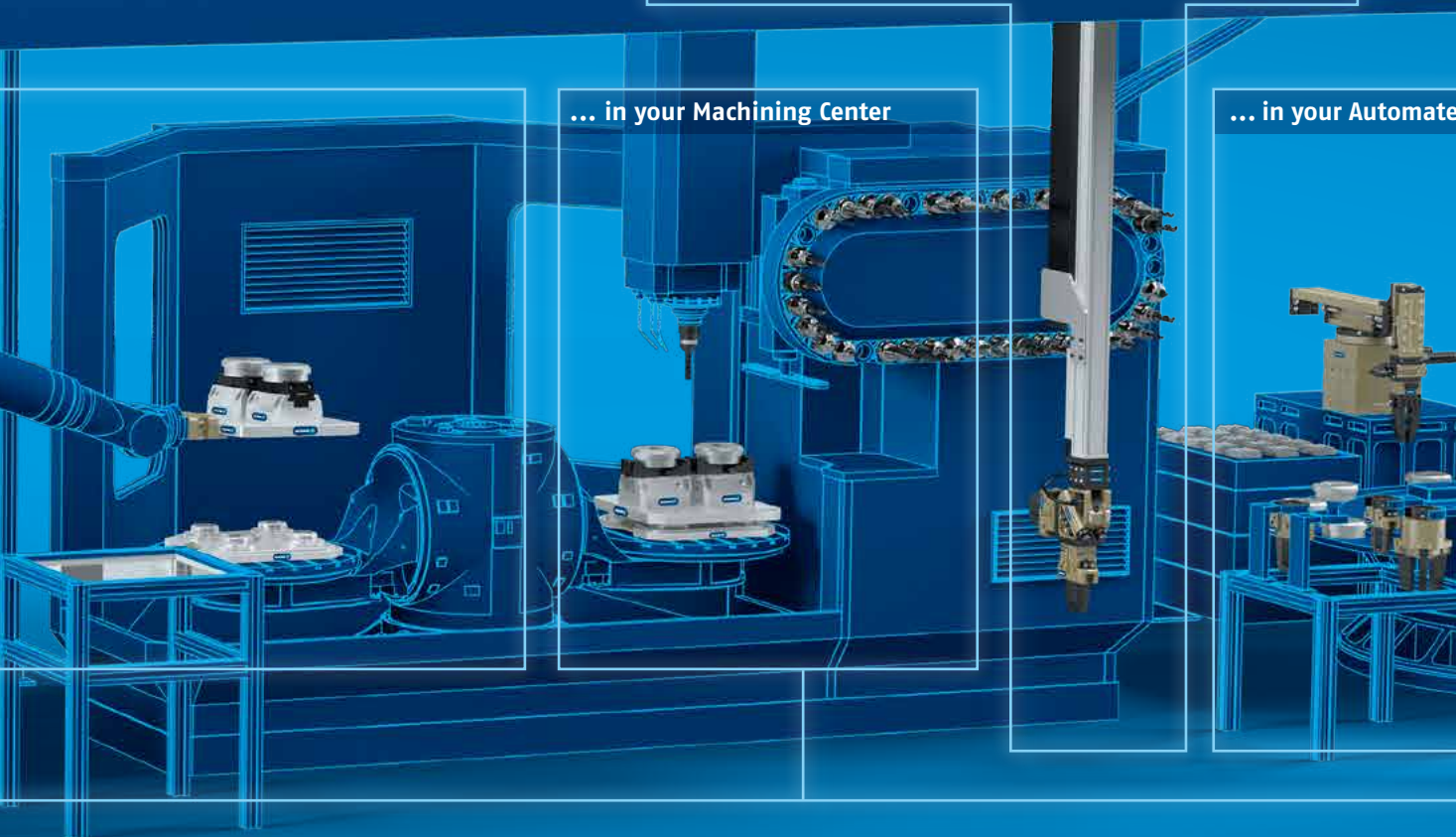
VEROS NSE mini – the pneumatic quick-change pallet system in a very flat design



... in your Automated Handling System



... in your Machining Center



... in your Automate



75,000 customized solutions

Hydraulic expansion technology for tool or workpiece clamping

100% encapsulated

KONTEC KSK Centric clamping vise fully functional in harsh environments



5-sided workpiece machining

in one set-up – MAGNOS Magnetic clamping technology



0.3 mm shank diameter

TIRIBLOIS mini sets a benchmark in micro machining

less than **3** μ run-out accuracy

TIRIBLOIS-SVL Super-slim tool extension optimized interfering contours



up to **85,000** rpm

TIRIBLOIS-S predestined for high-speed cutting



... in your Automated Assembly



180% better gripping force – mass ratio
 EGP – The powerful electronic gripper for small components with integrated electronics

∞ combination options
 SCHUNK Modular assembly system



25% greater gripping force
 MPG-plus – The most powerful pneumatic miniature gripper in the market

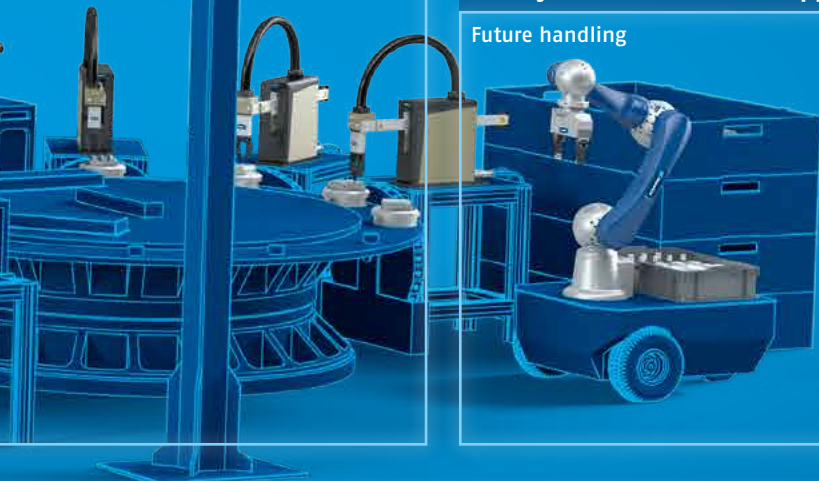


110 picks per minute
 PPU-E – The fastest pick & place unit in the market, PPU-P with 90 picks/min

Automated Assembly

... in your Service Robotics Application

Future handling



6 degrees of freedom
 Powerball lightweight arm LWA 4P
 The lightweight arm with the world's most compact performance. Used on mobile platforms.



less than **3** μ run-out accuracy
 TRIBLOS-R with unique patented polygonal clamping technology



more than **35** years of experience in
 TLENDO Hydraulic expansion technology. TLENDO, the original. With 29 interfaces, versatile, with 3 μ run-out accuracy

up to **80** bar coolant-proof or peripheral coolant
 Versatile clamping range with GZB-S Intermediate sleeves



100% suitable for all SCHUNK toolholders
 TLENDO-SVL Tool extension – optimized interfering contours and super-slim



2,000 Nm torque with \varnothing 32 mm
 TLENDO E compact for large volume cutting, boring, reaming, and threads



0 μ permanent run-out accuracy
 TLENDO zero, perfect vibration damping, resulting in up to 50% longer service life



Your Automated Machine Loading





SCHUNK No. 1 Products for higher Productivity in your Automated Machine Loading.

By using our modules you will maximize your system productivity due to faster loading and changing processes. The systematic use of single modules from SCHUNK clamping technology and gripping systems pays off as single components and even more when used in combination.

It's time to use your machine's
full potential!

30% more productivity

75 kN holding force

300 kg payload capacity

SCHUNK No. 1 Products for higher Productivity for your Automated Machine Loading.



Automated loading of a milling machining center with the clamping pallet prepared on the set-up table. After the introduction of the clamping pin, the SCHUNK quick-change pallet module positions and clamps the pallet in seconds.

SCHUNK

VERO-S



300 kg loading capacity

NSR-A

Robot Coupling for Pallet Handling

Process reliable, precise, and space-saving

Automated pallet loading redefined. The slim SCHUNK NSR-A lightweight coupling with minimized interfering contours works extremely close to the machine table. Low designs consisting of a module for stationary use and clamping pallet are easy to implement. This leaves a lot of space in the machine room for the workpiece and axis movements.

- Highest pull-in forces of up to 15,000 N
- Lightweight of 1.6 kg
- Transmittable torques of up to 600 Nm
- Integrated slide monitoring and pallet presence monitoring



90% faster gripper change

SWS Quick-change System

One system, two components.

The standardized SCHUNK quick-change system SWS establishes the connection between the gripping system and robots or gantries. For manual change, SCHUNK offers the HWS manual change system.



75 kN holding force

VERO-S NSA plus Automated Palletizing System

Highly efficient automation

Positioned within seconds with a repeat accuracy of < 0.005 mm, SCHUNK NSA plus is the precision module for automated machine loading. Built very low, it leaves ample space in the machine room.

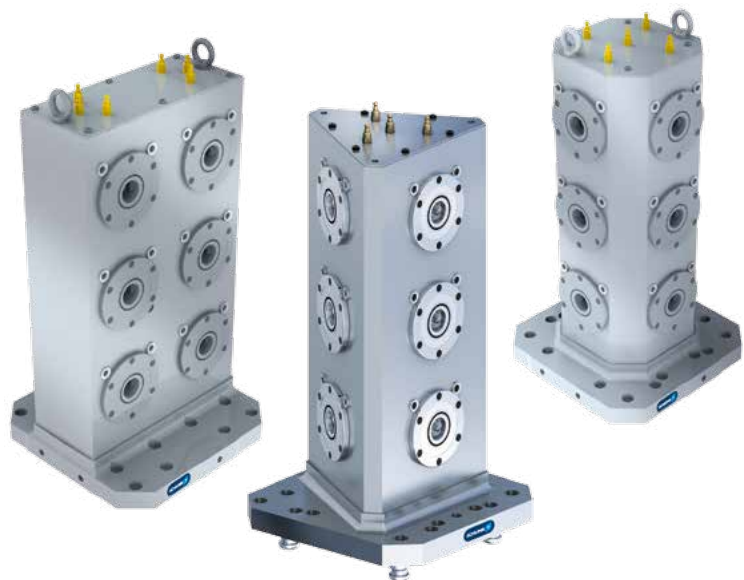


90% less set-up costs due to setting up during machining

Tombstones with VERO-S Quick-change Pallet Module

Fundamental high performers

Three tombstone shapes. Extremely compact design. Ideally suited to the selected SCHUNK clamping device. Activate the full power potential of your horizontal machining centers.



SCHUNK No. 1 Products for higher Productivity for your Automated Machine Loading.



30% more productivity due to automated machine loading

NEW PZN-plus Gripper with GSW-B Spindle Interface

The clever productivity booster

Cuts set-up times and saves complex and expensive automated solutions. The SCHUNK gripper sits in a toolholder like a tool and can easily be changed into the spindle due to the standard interface. The result: fully automatic workpiece change only with the help of the axis movements of the machine tool.

NEW PZN-plus gripper with flexible GSW-B-AGE Compensation Unit

Before it breaks

Excessive forces during automatic machine loading? The SCHUNK GSW-B-AGE yields, compensation for tolerances and inaccuracies in six degrees of freedom is the answer.

180° rotation

SRH Swivel Head

Precise rotation and long life span

Maximum automated system productivity for demanding rotation tasks. Modules in the SCHUNK SRH series have a consistently modular structure and comprise tried-and-tested SRU rotary modules in conjunction with SRH rotary corners, EDF electrical feed-throughs and MDF media feed-throughs.



30 seconds, and the machine room is clean.

RGG Cleaning Unit

Sparkling clean machine table

Can be used for workpiece and machine room. Fits on almost any conventional toolholder mountings with a diameter of 20 mm. Cleans using air or coolant. Simply put into the machine and reduce idle times.



4.9 kg maximum workpiece weight

Vacuum Gripper GSW-V

Making machine tools more productive

Universal, maintenance-free tool for handling a large variety of flat components. Due to the integrated Venturi nozzle, this SCHUNK gripper doesn't need additional parts to generate a vacuum.





Automated raw and finished part handling with the machine spindle.

0% electricity requirement

Magnetic Gripper GSW-M

Attracting pole position

Maximum system productivity due to lean automation. Whether it's metal sheets, bearing rings or workpieces with complex contours – the SCHUNK magnetic gripper handles anything ferromagnetic without making adjustments or the need to change fingers, and efficiently based on the machine's own axis without electricity.



12 sizes available

Beta Linear Axis

Dynamic and smooth-running

You can choose between roller guides and profiled rail guides, depending on the application. The Beta series enables economical axis applications with high requirements for dynamics and smooth running. Long strokes can also be achieved with this axis type.





Your Automated Handling System





SCHUNK No. 1 Products for higher Productivity in **your Automated Handling System.**

SCHUNK offers the world's largest program of grippers, rotary, and swivel modules, linear modules, and robot accessories. Handling and assembly processes in the field of automation require diversity in variations of modules, particularly if the standard components are combined with each other. Discover the unforeseen possibilities.

It's time to use your machine's
full potential!

More than **500** standard combinations for line and room gantries

90% faster gripper change

100% cycle increase

More than 500 standard combinations

Line and Room Gantries LPP/LPE/RPE

Standard gantries from a modular system

Pre-assembled for immediate start-up. Pneumatic or electric. These standardized configurations can be combined into customized gantries, saving up to 50% in investment, project planning, assembly and installation.

- 5 kg, 10 kg, and 20 kg payload
- 300 mm in to 1,500 mm X-stroke/Y-stroke
- 25 mm in to 500 mm Z-stroke



360° endlessly turning

ERM Electric Rotary Module

Extremely adaptable – integrates perfectly

The drive can be freely adjusted in 90° steps. In this way, the interfering contour of the SCHUNK rotary module can be optimally adjusted to the gantries or robots. Depending on the engine, the endlessly turning module has torques of up to max. 75 Nm. It can attain any intermediate positions and is designed for a maximum speed of up to 62.5 RPM.



The No. 1 in gripping

The NEW SCHUNK PGN-plus 2-Finger Parallel Gripper

Now NEW with permanent lubrication in the multi-tooth guidance. Lifelong maintenance-free.* Guaranteed!

High-precision handling, higher maximum moments, higher gripping forces. Various options for special cases of application.

* Under normal, clean operating conditions more than 50 million cycles.



Up to 1,750 N gripping force

EGA Long-stroke Gripper

Adaptable, robust, compact.

With adaptation possibilities for all commonly available servo motors, the SCHUNK EGA is the most versatile electric long-stroke gripper that can be used on the market. Easily integrated in the automation system control, all properties of the current system can be transferred to the module.



IP65 protection class

OPR Collision and Overload Protection

Rapid reaction

Particularly designed for the use on small robots. Due to the minimum reaction time, the SCHUNK OPR reliably prevents damages due to collisions or overloads.





Use of a SCHUNK SRU-plus rotary unit in handling and assembly for picking up and positioning small components.

100% cycle increase

SRU-plus 20-S Universal Rotary Actuator

The new benchmark

Increase cycle numbers by up to 100% compared to state-of-the-art rotary actuators of the same size. The SCHUNK high-speed module allows for swiveling times from 0.3 s and cycle numbers of up to 3,700 cycles per hour.



Performance Level d/SIL 3

EGN Safety Gripping System

Permanently live

With the SLS, SOS and STO functionalities, the SCHUNK EGN gripping system certified in accordance with DIN EN ISO 13849 enables safe human/machine collaboration. In emergency stop mode as well, the gripper remains energized for securely holding the workpiece.





Your Automated Assembly





SCHUNK No. 1 Products for higher Productivity for **your Automated Assembly.**

Wherever pick & place and assembly tasks place the highest demands on precision and economy, SCHUNK is the solution provider for perfect implementation. No matter whether partially or fully automatic. No matter which drive medium. The innovative SCHUNK components always get that little bit of extra power out of your processes.

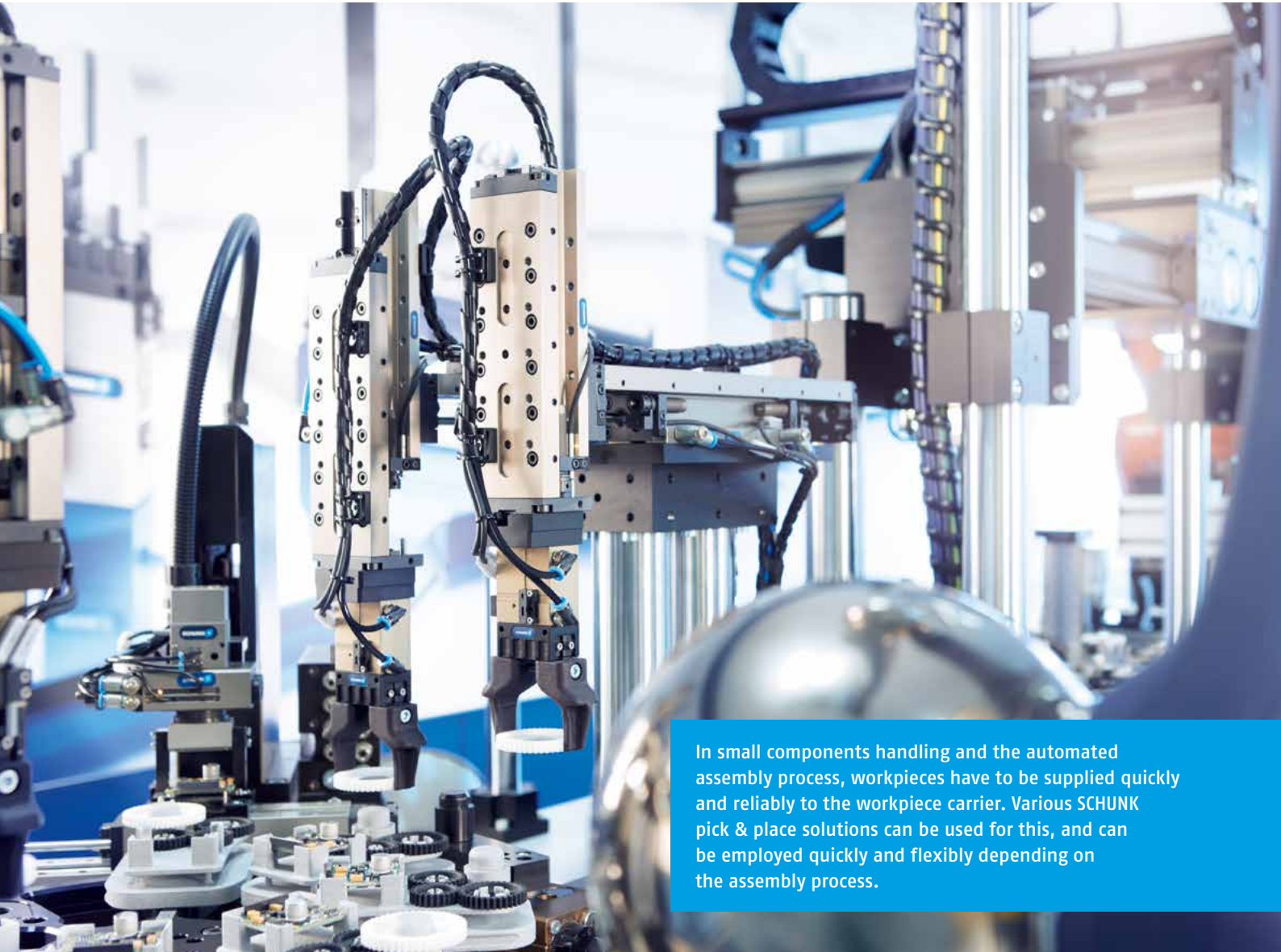
It's time to use your machine's
full potential!

110 picks per minute

∞ combination options

3 compensation directions

SCHUNK No. 1 Products for higher Productivity for your Automated Assembly.



In small components handling and the automated assembly process, workpieces have to be supplied quickly and reliably to the workpiece carrier. Various SCHUNK pick & place solutions can be used for this, and can be employed quickly and flexibly depending on the assembly process.

6 degrees of freedom

FT 6-Axis-Force-Moment Sensors

The largest diversity of variations on the market

SCHUNK 6-axis force-moment sensors measure forces and moments of 6 components during applications such as polishing, deburring, and difficult milling operations.



100% precision fitting

SCHUNK Adapter Plates

The individual connection

SCHUNK adapter plates ensure a high fitting accuracy in the interaction of robot accessory modules and ISO flange interfaces.



250 RPM endless turning

ERS Electric Rotary Module with DDF

Compact and extremely modular

Compact electric rotary module with integrated pneumatic and electric feed-through.



Compensation in 3 directions

TCU Compensation Unit

Optimal mounting or joining position

For automated joining or gripping of precise components. The SCHUNK TCU compensation unit compensates in X-, Y-, and Z-direction, corrects angle errors, and achieves rotational compensation.



110 picks per minute

PPU-P and PPU-E Pick & Place Units

The fastest in their class

With 110 picks per minute, the servo-electric SCHUNK PPU-E is the fastest pick & place unit in the market. SCHUNK PPU-P keeps up a brisk pace pneumatically with 90 picks per minute. Both are the ultimate in high-speed assembly work.

- 2 kg – 5 kg payload
- 10 microns repeat accuracy
- Plug & Work makes start-up as easy as can be



∞ combination possibilities

SCHUNK Modular Assembly System

More individuality and economy

Comprehensive, top class modular system for individual solutions. Benefit from the variety of components for automated assembly that have been tried and tested 100,000 times.



Up to 75 cycles per minute

DRL Rotary Pick & Place Unit

High-speed assembly with integrated rotary motion

Highly dynamic yet steady pick & place operations with rotating angles of 90° or 180°. The DRL is a specialized trendsetter for modular high-performance assembly in the SCHUNK program.



Over 10,000 possible combinations

Pillar Assembly System

The heart of the design in the most extensive modular program in the world

Unique pillar assembly system with numerous standardized pillar profiles, adapter plates, centering and connection elements. With more than 10,000 possible combinations, it is the most extensive modular program in the world for high-performance assembly.



6 sizes available

LDN Linear Module

For high-precision high-speed applications

Powerful servo motors can achieve a high rated force even in smaller modules. Alternatively, higher masses can be moved in vertical applications.





Up to 6 parts per cycle

RVK Collection Gripper

With 4 or 6 grippers

The SCHUNK RVK increases the productivity of pick & place applications by the collect & place principle. It collects the parts directly one after another, brings them collectively to the assembly or placement locations and puts them down there one after another.

- Collect & place principle is very easy to implement with RVK
- Minimizing cycle time and traverse paths
- Integrated valve technology
- Integrated electric feed-through for permanent monitoring of all grippers, leading to high process reliability.
- Simple mounting of the RVK on ERS 135, ERS 170 or RST-D 087 from SCHUNK

25% higher gripping force

Miniature Parallel Gripper MPG-plus

The benchmark

The most powerful miniature pneumatic gripper on the market. Ready for use around the world, wherever small parts need to be handled reliably and quickly. With its power density, the MPG-plus sets the new standard for handling small parts.



180% better gripping force/mass ratio!

EGP Electric Gripper for small components

The alternative

The most compact electric gripper for small components on the market. Based on the platform of the tried-and-tested pneumatic SCHUNK MPG-plus. The SCHUNK EGP makes changing from pneumatic to mechatronic gripping modules into child's play.



Swiveling time 0.18 s/180°

EGS Gripping Rotary Unit

Efficiency class in handling small parts

The most compact electrical gripping rotary unit in the world. The SCHUNK EGS combines electrical gripping and swiveling in the most compact space within a single housing. The angle of rotation can be defined freely between 40° and 320°, and can be set directly on the module as the gripping force can.



340° rotation range

Powerball ERB

Well-rounded and intelligent

The unique SCHUNK rotary module with swiveling/tilting function combines high torque and precision in the smallest of spaces. With up to 34 Nm and a weight of 3 kg, the SCHUNK ERB sets benchmarks in mechatronic integration.



The SCHUNK RVK collection gripper increases the efficiency of pick & place applications many times over by the collect & place principle in automated assembly.



50% higher moment load

DDF 2 Rotary Feed-through

Flexibly rotating up to 360°

The latest standard for modern robot and assembly applications. With 3 variants, the DDF 2 offers full flexibility for different process requirements. You have the choice: Pneumatic feed-through, feeding through of electric signals or the combination of both.



High torque 29.3 Nm

RST-D Ring Indexing Table

Versatile with power!

The SCHUNK RST-D for modular high-performance assembly possesses any amount of power for larger structures and up to six optional pneumatic feed-throughs. The pitch can be set to 4, 6, 8, 12 or even 16 steps as desired.



4 air feed-throughs

CWS Manual Change System

Manually fast

The SCHUNK CWS flat and weight-reduced manual change system ensures a fast change of grippers at the robot when re-equipping for a new range of parts. A noticeable increase in productivity can thus be achieved in particular for small and medium batch sizes.



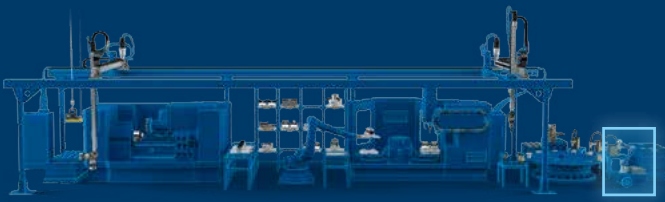
Suitability for cleanroom applications ISO class 6

LM Linear Module

Standard solution for high-precision applications

The linear modules of the LM series are equipped with pre-loaded junction rollers in hardened prismatic running rails as guides. This precision guidance system guarantees absolute freedom from play in the overall system and offers high load capacities in all directions.





Your Service Robotics Application





SCHUNK No. 1 Products for higher Productivity in your Service Robotics Application.

Inspection systems, applications on mobile platforms, human to machine and human to human interaction. On the economic side of things, service robotics is becoming increasingly dynamic. Our mechatronic products are setting new standards in both professional and private spheres. SCHUNK is pushing development forward.

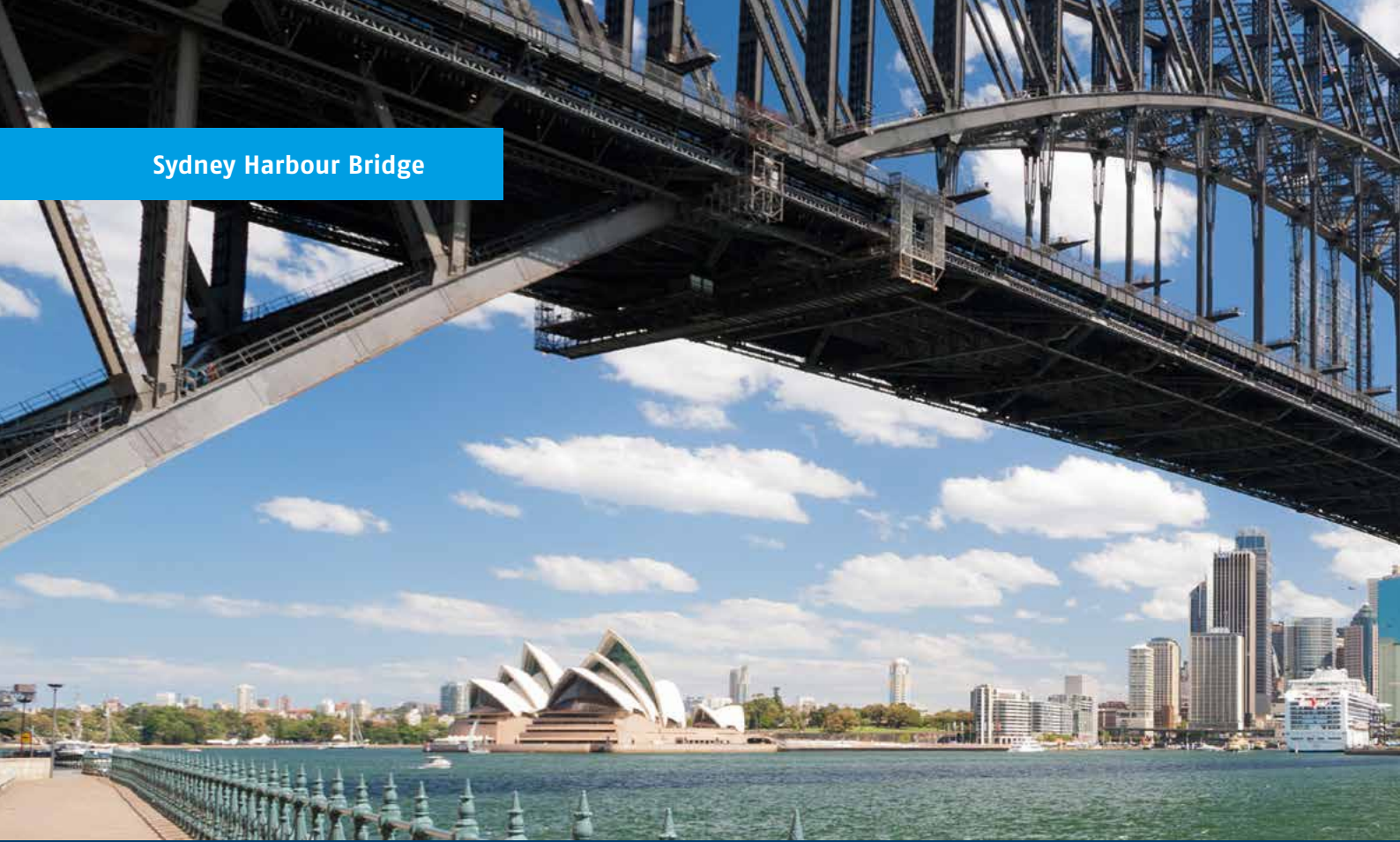
It's time to use your machine's
full potential!

> 7 degrees of freedom

100% flexibility

340° rotation range

Sydney Harbour Bridge



SCHUNK Mobile Gripping Systems for higher Productivity in your Service Robotics Application.

SCHUNK is working intensively on numerous service robot projects worldwide. Due to the battery operation, our revolutionary developments are predestined for mobile platforms and independent. Their progress is documented by field-tested applications and projects in the research and testing phase.





Renovation Work

Sandblasting robots take over the dangerous and harmful maintenance of the Sydney Harbour Bridge. The core of the robots are SCHUNK LWA 4 lightweight arms in pressurized protective casings.

New Products

Your Automated Machine Loading

Your Automated Handling System

Your Automated Assembly

Your Service Robotics Application



Quality Assurance

The LWA 4P is a highly flexible handling device for a fully automated laboratory system at ThyssenKrupp AG. The 6-axis Powerball lightweight arm from SCHUNK is equipped with a mechatronic PG 070 gripper, and handles sensitive cement samples.



Laboratory Use

SCHUNK mobile gripping system components are used for new automation solutions in laboratory environments of the pharmaceutical and chemical industry.



Microchip Production

By using SCHUNK lightweight robots, our customized solutions provide flexible linking in industrial production. This example shows a mobile robot, carrying out transportation tasks such as loading and unloading in cleanroom conditions.



Exploration

The remote-controlled robot developed by the Harris company makes it possible to safely remove hazardous materials. As a manipulator, a modular lightweight arm based on SCHUNK PRL-plus modules is used.



Future Service Robotics

Wrists and the 1-finger-hand from the standardized module program for mobile gripping systems from SCHUNK ensure for mobile handling of the Care-0-bot® 4 of the Fraunhofer Institute for Production Technology and Automation IPA.





Rehab and Care Robot

The battery-powered SCHUNK LWA 4D lightweight arm has 7 degrees of freedom. Service robots developed by researches at the University of Bremen, help people with disabilities to achieve more independence.

SCHUNK No. 1 Products for higher Productivity in your Service Robotics Application.





 LWA 4P for mains or battery operation

6 degrees of freedom

Powerball Lightweight Arm LWA 4P

A lightweight arm with the world's best compact performance

The arm has three ideally integrated Powerball modules, offering 6 degrees of freedom. Integrated intelligence makes powerful, mobile handling possible as never before.

- Weight/load capacity ratio of 2:1
- Gripping radius of over 700 mm
- Excellent repeat accuracy of ± 0.15 mm
- 24 V DC supply for mobile applications
- For every mobile platform – independent of the manufacturer

First industrial 5-finger hand

SVH 5-Finger Gripping Hand

An extremely wide range of sensitive gripping operations

The industrial version of the anthropomorphic SCHUNK SVH 5-finger hand grips nearly as perfectly as the human hand. Due to the integrated control in the wrist, the SCHUNK SVH can accomplish almost all of the movements of the human hand.



120 N gripping force

WSG 2-Finger Parallel Gripper

Configured in 2 minutes

Sensitive handling. This sensitive gripper communicates via Profibus DP, CAN or Ethernet TCP/IP. Due to an integrated web server and tactile sensors, handling tasks of the future are simple.



100% flexibility

SDH-2 3-Finger Industrial Hand

Using people as its model

The SCHUNK 3-finger industrial hand features maximum flexibility when it comes to the shape, size, and above all, position of the gripped parts. Form-fit and force-fit gripping with integrated tactile sensors make it a sensitive helper.



Height 14 mm

FWS Manual Change System

Extremely flat

The SCHUNK FWS flat manual change system is used where it is important to have the shortest possible clearance between the robot arm and tool, and the weight should be low.



It's time to use your machine's full potential!



Two SCHUNK LWA 4P lightweight arms take over the complete handling from separating out parts through to loading the machine in two separate systems. They can be moved on a linear axis or along passive rails.

New Products

Your Automated Machine Loading

Your Automated Handling System

Your Automated Assembly

Your Service Robotics Application



10 degrees of freedom

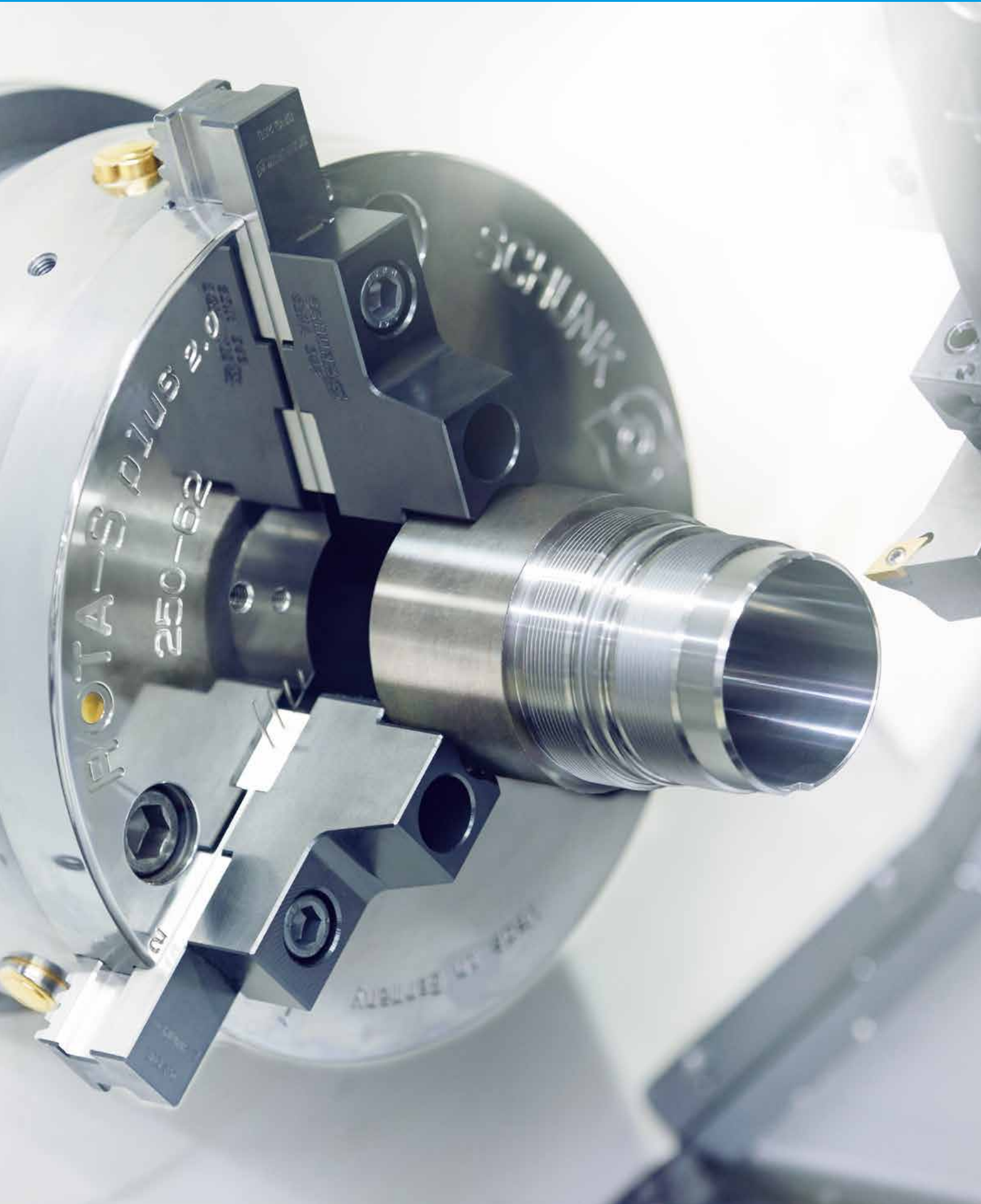
LWA 4D Dextrous Lightweight Arm

From mine detectors to the latest in rehabilitation systems. The SCHUNK lightweight arm LWA 4D sets standards and can be found on service robots all over the world – often combined with our sensitive gripping systems.





Your Lathe





SCHUNK No. 1 Products for higher Productivity in **your Lathe.**

From powerful chucks, precision toolholders, and the world's largest standard chuck jaw program up to customized chuck jaw and hydraulic expansion toolholder solutions. SCHUNK always offers you the appropriate product.

It's time to use your machine's
full potential!

< 60 seconds quick jaw change

50% larger clamping range

0.01 mm repeat accuracy

SCHUNK No. 1 Products for higher Productivity in your Lathe.



The power chuck ROTA NCF plus 2 is the precise powerhouse for modern turning operation. The integrated centrifugal force compensation ensures save clamping at high RPM.

Sold more than **10,000** times

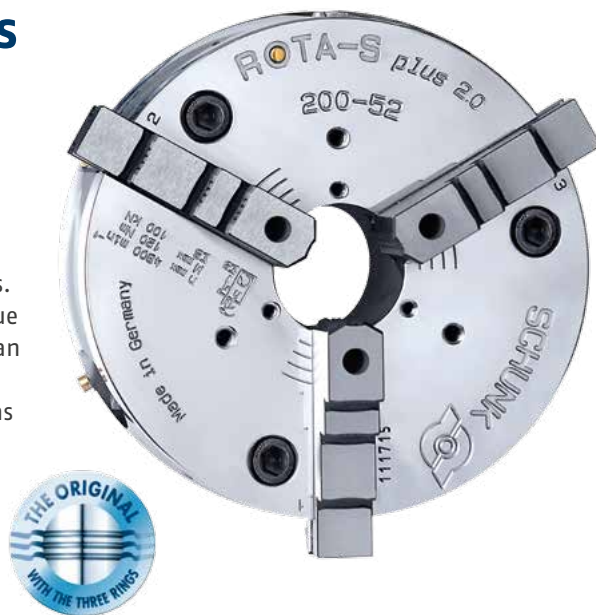
ROTA-S *plus* 2.0

Manual Chuck

The new generation

Its predecessor ROTA-S plus has already been sold by SCHUNK 10,000 times. The new generation ranks high due to: Higher RPM and cutting speeds due to permanently high clamping forces. Convenient jaw change in less than a minute due to optimized jaw quick-change system. Faster to use due to maximum operator safety. The ten-thousand-fold proven concept has now been perfected. It sets the standard.

- High jaw change repeat accuracy
- 3-fold base jaw securing
- More convenience through sensible accessories such as expansion arbor and changeable protection sleeves



60 seconds quick jaw change

ROTA THW *plus*

Power Chuck

Quick to adapt

The set-up time killer as of batch size 1. Quickly adaptable to a whole variety of clamping jobs due to jaw change in less than a minute.



410 kN clamping force

ROTA NCO

Power Chuck

Bursting with power

The specialist for rough machining with a large jaw stroke and long life span. Does the job that others give up on. Up to 410 kN clamping force.



0.01 mm repeat accuracy

VERO-S NSL turn Quick-Change Pallet System

Set-up timer killer for mill/turn centers

Safe clamping even below a speed of 2,000 RPM. Very simple connecting interface with a repeat accuracy of 0.01 mm turns the module for stationary use into a turbo productivity station.



Clamping range **4 – 460** mm

ZENTRICO THL plus Steady Rests

Highly precise with a long service life

A plus for any lathe in shaft machining. Excellent centering and repeat accuracy combined with maximum clamping forces. Integrated hydraulic cylinder with a large clamping range. For all around precision.

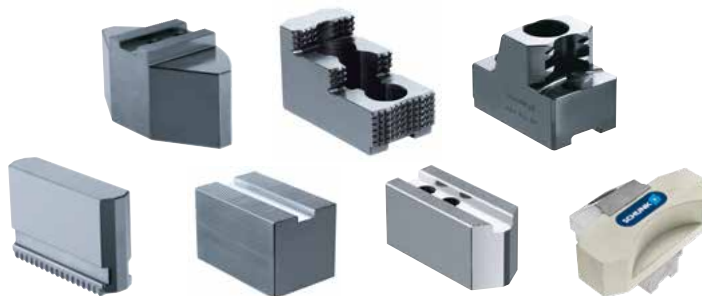


SCHUNK No. 1 Products for higher Productivity in your Lathe.



16,000,000 chuck jaws sold worldwide

With more than 1,200 different types, this is the world's largest standard program of chuck jaws for any lathe chuck application. More than 16 million standard chuck jaws have been delivered by SCHUNK since 1966 and are in use all over the world.



50% larger clamping range

SCHUNK Claw Jaw

Even more bite!

Unbeatable when it comes to transmitting high torques. The sharp serrations quickly claw into the workpiece surface and clamp them safely in one go. The possible combinations of basic, intermediate and top jaws expand the standard components' range of application by up to 50%.



3° maximum deflection possible

Pendulum Jaws

Intelligent yielding

As strong as necessary, as flexible as possible. Thin-walled workpieces can be clamped safely, without being deformed and at low-cost with standardized SCHUNK pendulum jaws with 6- or 12-point clamping. Within very little time conventional 3-jaw chucks can be re-equipped, to allow for 6-point clamping.



60,000 customized chuck jaw solutions

SCHUNK Chuck Jaws in special design

For complex clamping tasks

Modified SCHUNK standard jaw or complex special design. Perfectly customized, ideal solutions. As individual as necessary. As economical as possible.



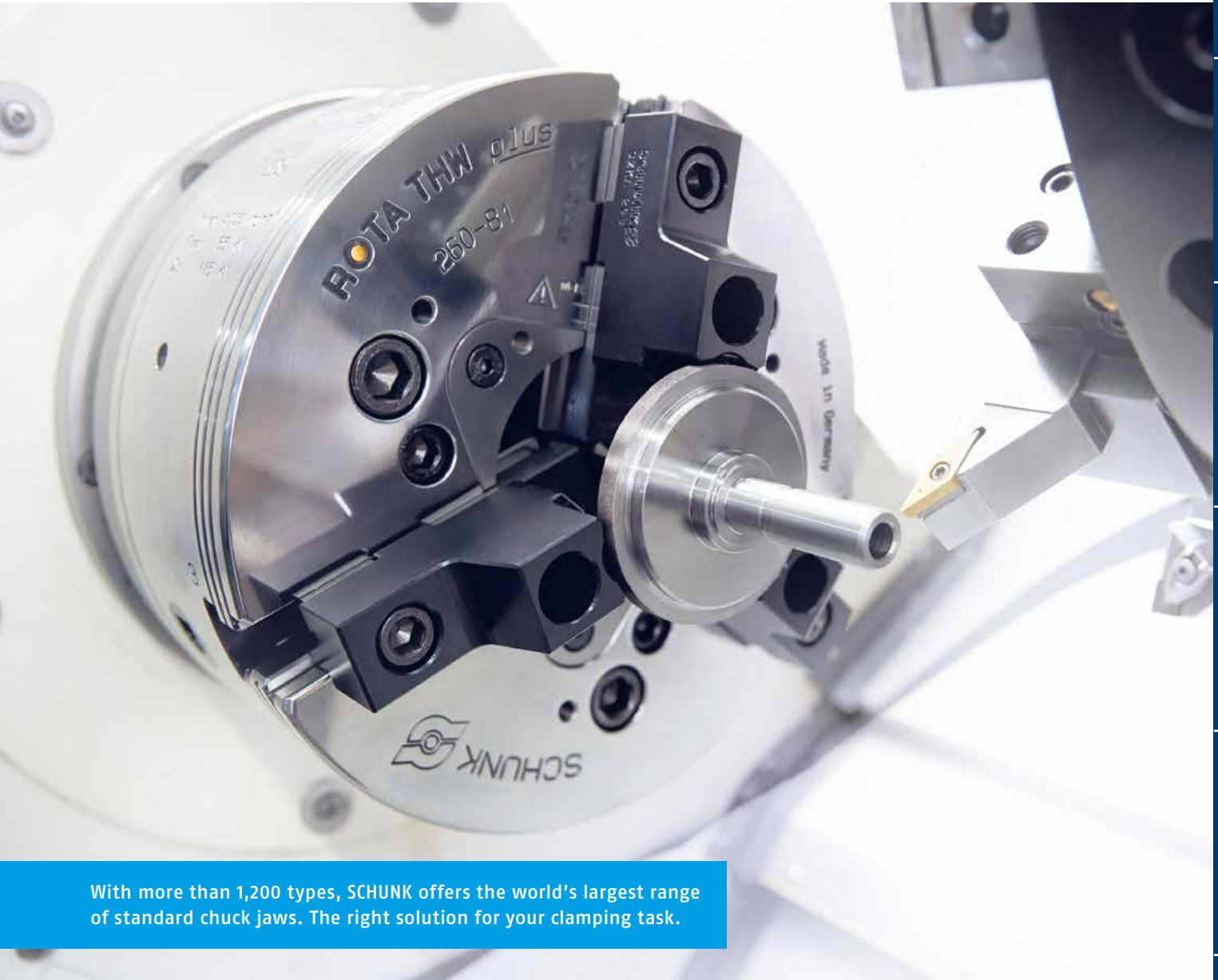
30 - 40% less wear

Universal Base Jaw for Wedge-Bar Chuck

Honing for precision

Exclusive at SCHUNK: Base jaws – hardened and precision ground. Frequent top jaw changes easily cause wear on both components if the locating surface is not ground. SCHUNK base jaws stand for maximum repeat accuracy, perfect power transmission and longevity.





With more than 1,200 types, SCHUNK offers the world's largest range of standard chuck jaws. The right solution for your clamping task.

Up to 300% improved surface finish

T|E|N|D|O^{TURN} Hydraulic Expansion Toolholder

Including vibration damping!

The only modular SCHUNK hydraulic expansion toolholder that requires no manufacturer-specific interface. Unique vibration damping for excellent workpiece surfaces. Two inserts: DSE double vise for run-out and repeat accuracy of < 0.003 mm. DKE lathe clamping insert for increased productivity with the equipment at hand.





Your Machining Center





SCHUNK No. 1 Products for higher Productivity in **your Machining Center.**

Innovative and highly precise toolholding systems in the SCHUNK Total Tooling program featuring the largest modular system of stationary worldholding cover a unique range of machining requirements.

It's time to use your machine's
full potential!

0 interfering contour

0 μ permanent run-out accuracy

0.3 mm shank diameter

SCHUNK No. 1 Products for higher Productivity in your Machining Center.



MAGNOS square pole technology for deformation-free clamping and the TENDO E compact hydraulic expansion toolholder for increasing the tool life by up to 300%.

Up to **300%**
longer tool life*

T|E|N|D|O® E compact Hydraulic Expansion Toolholder

Full power

The ultimate for large volume cutting. Convincingly priced, it makes it easy for you to change from mechanical and thermal toolholders to the more precise SCHUNK TENDO quality.

- Highest torques up to 2,000 Nm (with a diameter of 32)
- Run-out accuracy and repeat accuracy < 0.003 mm
- Up to 40% raised tool life

* Verified in a study by the wbk Institute of Production Technology at the Karlsruhe Institute of Technology (KIT).

100% suitable

T|E|N|D|O® SVL Tool Extension

Long and super-slim

The innovative, SCHUNK TENDO SVL tool extension with optimized interference contours from SCHUNK sets new standards in regard to set-up time and costs. The extension is clamped into any SCHUNK toolholder within seconds. The SCHUNK TENDO SVL has been designed for and is suitable for the precise machining of hard-to-reach areas.



100%
pull-out safety

T|E|N|D|O® Aviation Hydraulic Expansion Toolholder

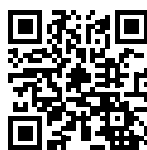
Pull-out safety lock – easy to use and economical.

The integrated pull-out safety lock ensures correct tool orientation and form-fit clamping on weld-on shanks. Micro creep movements are completely eliminated while maintaining extremely close form and position tolerances.



NEW!

Milling at
full speed!



www.schunk.com/tendo-e-compact



0 μ permanent run-out accuracy

T|E|N|D|O® zero Hydraulic Expansion Toolholder

Down to 0.000 mm in no time

Your pro for tight tolerances during drilling, reaming and drill-finishing. Perfect whenever you require the ultimate in run-out accuracy. For even cutting action and minimum tool costs. Perfect vibration damping for up to 50% longer tool service lives. Minimal set-up costs due to fast, safe tool changes.



0 Interfering contour

T|E|N|D|O® ES Hydraulic Expansion Toolholder

The powerhouse without interfering contour

First choice when power and every bit of machining area counts. Tool clamping is done directly in the mounting taper. The result is: maximum holding forces, run-out accuracy < 0.003 mm, and additional space in the machine room.



SCHUNK No. 1 Products for higher Productivity in your Machining Center.



0.3 mm shank diameter

TRIBOS®-Mini Polygonal Clamping Technology

The smallest, exchangeable precision toolholder

Used in the medical, dental, electrical engineering, watch and jewelry, countersunk electrodes, and mold making industries. SCHUNK TRIBOS-Mini sets the standards where miniaturization needs to be implemented economically. This tiny one for minimal shank diameters of 0.3 mm is the benchmark in micro machining. This tool allows for extremely precise applications.

- Run-out accuracy of < 0.003 at $2.5 \times D$
- Balancing grade G2.5 at 25,000 RPM or $Rev_{max} < 1$ gmm
- Quick and easy tool changes

3 μ run-out accuracy

TRIBOS®-R Polygonal Clamping Technology

Stable and precise

Ideal for volume machining through selectively optimized radial stiffness and clamping force and a run-out accuracy of < 0.003 mm. A special chamber system dampens vibrations and allows for a better surface and longer tool life.



85,000 RPM

TRIBOS®-s Polygonal Clamping Technology

Extremely slim design

Designed slimmer than any other known toolholder system on the market. Pre-destined for precise machining tasks in difficult to reach workpiece areas due to its run-out accuracy of < 0.003 mm.



85,000 RPM

TRIBOS®-RM Polygonal Clamping Technology

The small one for high-speed cutting

High radial stiffness due to small compact design and excellent run-out accuracy of < 0.003 mm. SCHUNK TRIBOS-RM is the compact precision champion when it comes to high speed ranges of up to 85,000 revolutions of tools as of 3 mm.



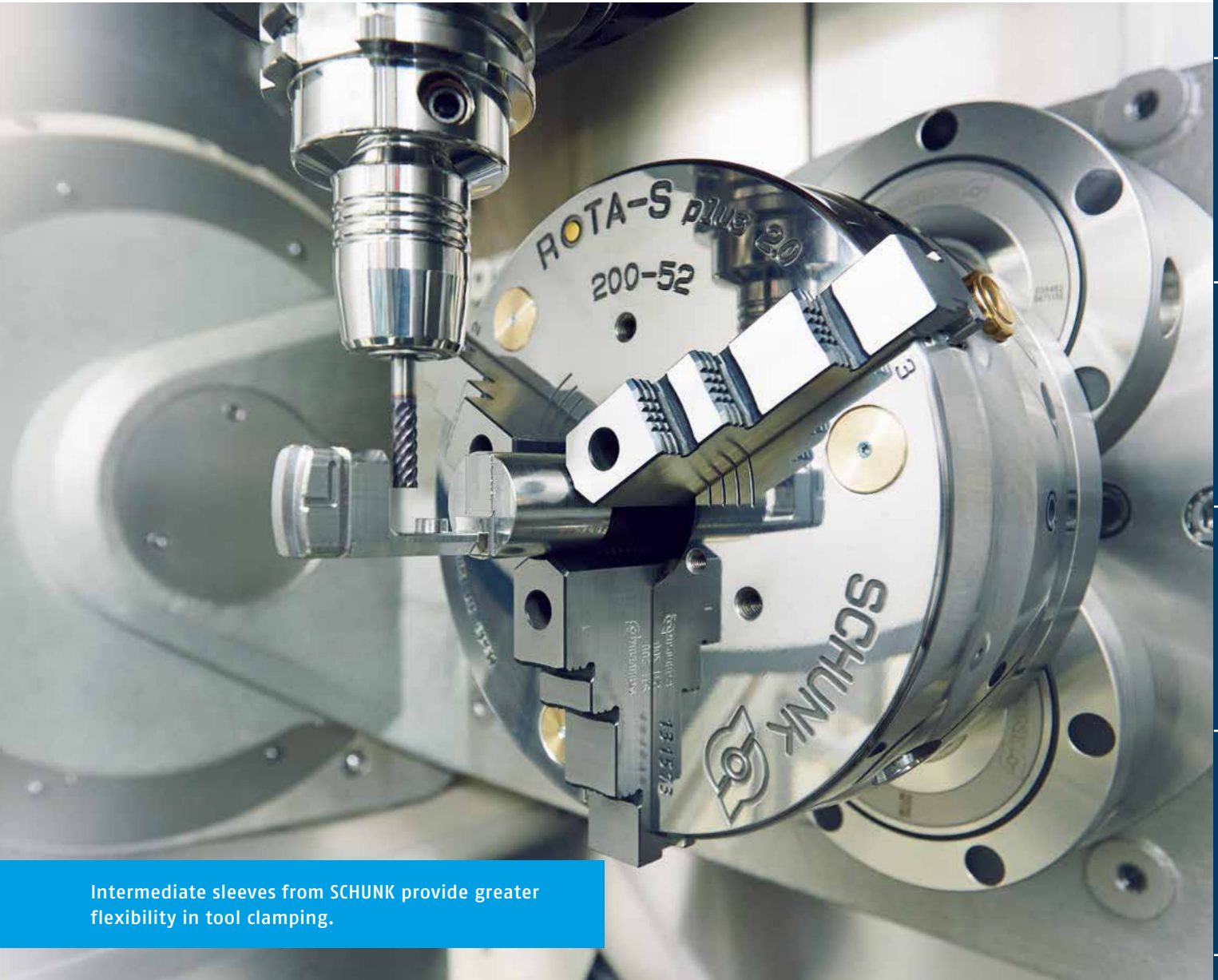
3 μ run-out accuracy

TRIBOS®-SVL Tool Extension

Better price due to standardization

Super-slim tool extension, made for highly precise machining of difficult to reach areas. Flexibly combined with standard toolholders and tools, an SCHUNK SVL saves you from buying expensive special tools.





Intermediate sleeves from SCHUNK provide greater flexibility in tool clamping.

Coolant-proof up to **80 bar** or peripheral coolant

GZB-S Universal Intermediate Sleeve

Systematic cooling

Versatile application with SCHUNK TENDO, SCHUNK TRIBOS and SCHUNK SINO-R in the clamping range of 3 to 25 mm. Six coolant slots make the difference. SCHUNK intermediate sleeves with their innovative peripheral coolant allow you to keep cool when it comes to high-precision machining.



SCHUNK No. 1 Products for higher Productivity in your Machining Center.



Pocket milling with TENDO toolholder in aluminum plate, securely clamped by PLANOS vacuum clamping technology.

5-sided workpiece machining in one set-up

MAGNOS

Square Pole Technology

Economy cubed

Due to the level positioning of the workpieces on the SCHUNK MAGNOS magnetic chuck, all of the five workpiece sides are easily accessible and can be machined from all sides in one set-up.

Increased tool life and process reliability

Consistent permanent magnetic holding force across the entire workpiece effectively minimizes vibrations and leads to improved surfaces and noticeable greater precision.

Minimum set-up times and increased productivity

The workpiece is clamped in seconds. Fine adjustment of the clamping elements or re-clamping the workpiece in the machining process are no longer required, nor are time-consuming set-up times and machine shutdown times.



100% encapsulated

KONTEC KSK Centric Clamping Vise

When the going gets rough

100% encapsulated. Fully functional in rough environments. Nothing keeps the sealed SCHUNK centric clamping vise from doing its job. No soiling. No jammed chips.



0.01 mm clamping precision

TANDEM Clamping Force Blocks

Enormous power with highest precision

There is room for power in the smallest machining area. In confined spaces these compact versions with high clamping forces and a maximum repeat clamping accuracy of 0.01 mm ensure precise results.



More than 75,000 implemented customized solutions

Customized Hydraulic Expansion Technology

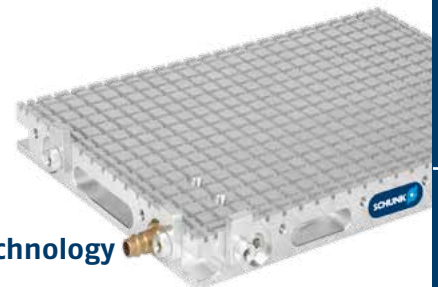
For tool or workpiece clamping. SCHUNK offers customized hydraulic expansion tool-holders when standard solutions have reached their limits even for extreme requirements.



±0.03 mm height tolerance

PLANOS Vacuum Clamping Technology

For process-reliable clamping. For fast and process-reliable clamping of flat-surface workpieces with an even underside. Even mechanically difficult to clamp components are clamped perfectly easy and deformation-free.



SCHUNK No. 1 Products for higher Productivity in your Machining Center.

90% less set-up costs

VERO-S

Quick-change Pallet System

The thriving one in the SCHUNK system

The set-up time killer for higher machine running times and a more rational production with batch sizes starting at one. Discover the ideal clamping solution for your machine.

- 90% less set-up costs
- With maximum pull-in forces of up to 40,000 N
- Repeat accuracy of < 0.005 mm



4-fold clamping station
VERO-S NSL plus 400 incl.
4 NSE plus 138 quick-change
pallet modules



2-fold clamping station
VERO-S NSL plus 200 incl.
2 NSE plus 138 quick-
change pallet modules



6-fold clamping station
VERO-S NSL plus 600 incl.
6 NSE plus 138 quick-
change pallet modules



8-fold clamping station
VERO-S NSL plus 800 incl.
8 NSE plus 138 quick-change
pallet modules

More than 500 variations for workpiece clamping

VERO-S

Quick-change Pallet System

The largest modular system for individualists

SCHUNK VERO-S clamps workpieces, pallets, clamping stations, and tombstones via one or more clamping pins. It offers the best clamping solution for every machine. Raised modules offer additional flexibility. With SCHUNK almost everything can be clamped – precise down to the micron and according to your individual needs.



Combination with
SCHUNK KONTEC system



Combination with SCHUNK
MAGNOS magnetic clamping technology



Combination with
SCHUNK TANDEM system

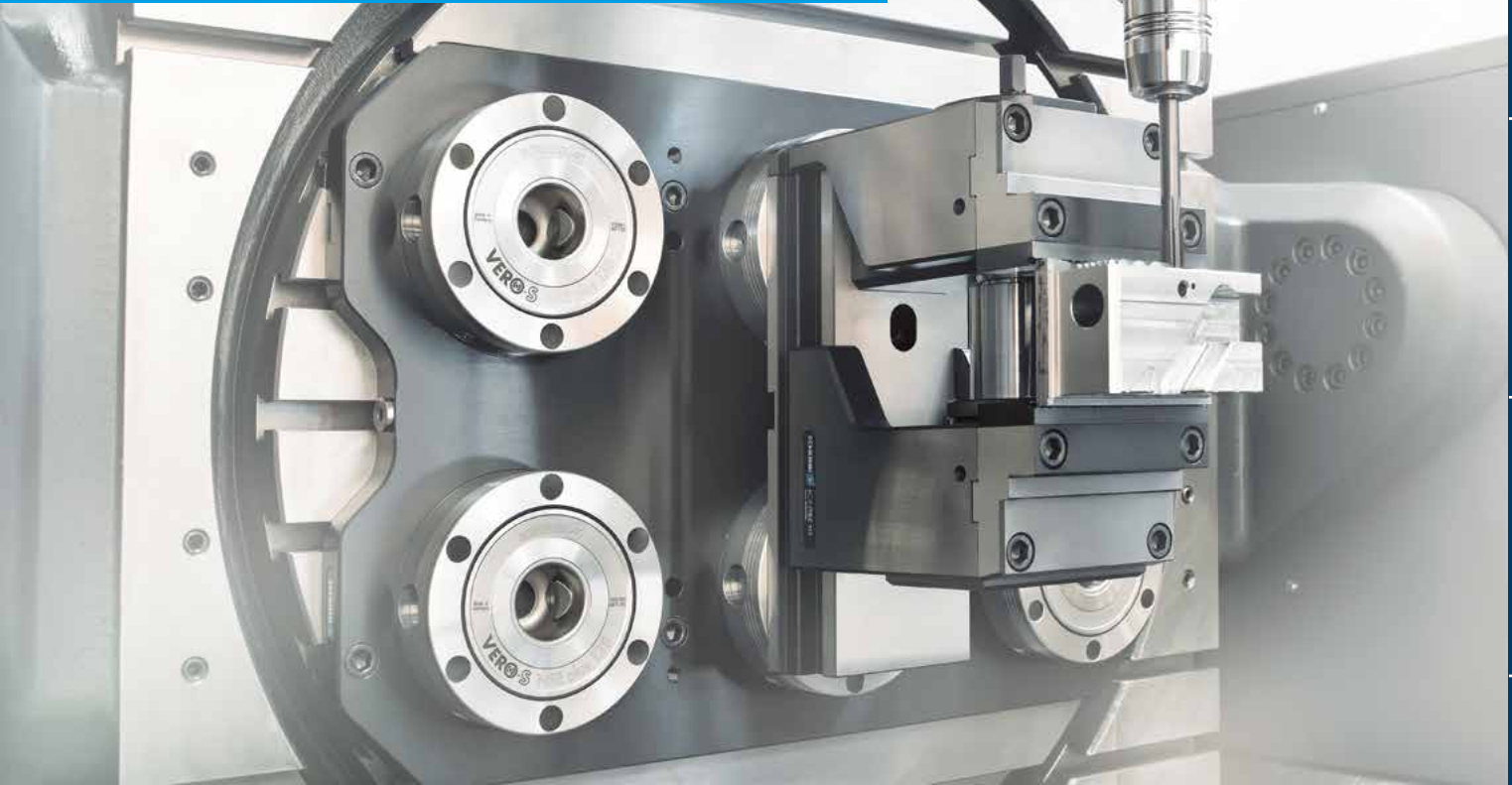


Combination with
SCHUNK ROTA chuck



Combination
with SCHUNK tombstones

Due to many combination possibilities with various clamping devices or other equipment, and the fact that workpieces can be set up outside the machine in parallel to the processing time, a consistent application of VERO-S offers a set-up cost reduction of up to 90%.



Height 20 mm

VERO-S NSE mini Quick-change Pallet System

Super-thin design

At a height of 20 mm, the SCHUNK quick-change pallet system VERO-S NSE mini is extremely thin. It is an expert in direct workpiece and pallet clamping, and in assembly. Ideal for smaller machines and simpler machining jobs.



2-fold, 4-fold or X-fold

VERO-S NSL mini Quick-change Pallet System

Variability due to the modular system

Whether as a 2-fold, 4-fold or multiple clamping station – SCHUNK VERO-S NSL mini can be adapted to any individual requirement. For any application. On all conventional machine tables.





Germany – Head Office

SCHUNK GmbH & Co. KG
Spann- und Greiftechnik
Bahnhofstr. 106 - 134
74348 Lauffen/Neckar
Tel. +49-7133-103-0
Fax +49-7133-103-2399
info@de.schunk.com
www.schunk.com



Austria

SCHUNK Intec GmbH
Friedrich-Schunk-Strasse 1
4511 Allhaming
Tel. +43-7227 223 99-0
Fax +43-7227 210 99
info@at.schunk.com
www.at.schunk.com



Belgium, Luxembourg

SCHUNK Intec N.V./S.A.
Industrielaan 4 | Zuid III
9320 Aalst-Erembodegem
Tel. +32-53-853504
Fax +32-53-836351
info@be.schunk.com
www.be.schunk.com



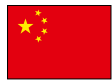
Brazil

SCHUNK Intec-BR
Av. Santos Dumont, 733
BR 09015-330 Santo André - SP
Tel. +55-11-4468-6888
Fax +55-11-4468-6883
info@br.schunk.com
www.schunk.com



Canada

SCHUNK Intec Corp.
370 Britannia Road E, Units 3
Mississauga, ON L4Z 1X9
Tel. +1-905-712-2200
Fax +1-905-712-2210
info@ca.schunk.com
www.ca.schunk.com



China

SCHUNK Intec Precision Machinery Trading
(Shanghai) Co., Ltd.
Xinzhuang Industrial Park,
1F, Building 1, No. 420 Chungong Road,
Minhang District
Shanghai 201108
Tel. +86-21-54420007
Fax +86-21-54420067
info@cn.schunk.com
www.cn.schunk.com



Czech Republic

SCHUNK Intec s.r.o.
Tuřanka 115 | CZ 627 00 Brno
Tel. +420-513 036 213
Fax +420-513 036 219
info@cz.schunk.com
www.cz.schunk.com



Denmark

SCHUNK Intec A/S
c/o SCHUNK Intec AB
Morabergsvägen 28
152 42 Södertälje Sweden
Tel. +45-43601339
Fax +45-43601492
info@dk.schunk.com
www.dk.schunk.com



Finland

SCHUNK Intec Oy
Hatanpään valtatie 34 A/B
33100 Tampere
Tel. +358-9-23-193861
Fax +358-9-23-193862
info@fi.schunk.com
www.fi.schunk.com



France

SCHUNK Intec SARL
Parc d'Activités des Trois Noyers
15, Avenue James de Rothschild
Ferrières-en-Brie
77614 Marne-la-Vallée, Cedex 3
Tel. +33-1-64663824
Fax +33-1-64663823
info@fr.schunk.com
www.fr.schunk.com



Great Britain, Ireland

SCHUNK Intec Ltd.
Cromwell Business Centre
10 Howard Way
Interchange Park
Newport Pagnell MK16 9QS
Tel. +44-1908-611127
Fax +44-1908-615525
info@gb.schunk.com
www.gb.schunk.com



Hungary

SCHUNK Intec Kft.
Széchenyi út. 70. | 3530 Miskolc
Tel. +36-46-50900-7
Fax +36-46-50900-6
info@hu.schunk.com
www.hu.schunk.com



India

SCHUNK Intec India Private Ltd.
80 B, Yeshwanthpur, Industrial Suburbs
Bangalore 560022
Tel. +91-80-40538999
Fax +91-80-40538998
info@in.schunk.com
www.in.schunk.com



Indonesia

Trade Representative Office of
SCHUNK Intec Pte. Ltd.
JL Boulevard Utama BSD
Foresta Business Loft 1 Blok C no. 16
Tangerang, 15339
Tel. +6221-3003-2993
Fax +6221-3003-2995
info@id.schunk.com
www.schunk.com



Italy

SCHUNK Intec S.r.l.
Via Barozzo | 22075 Lurate Caccivio (CO)
Tel. +39-031-4951311
Fax +39-031-4951301
info@it.schunk.com
www.it.schunk.com



Japan

SCHUNK Intec K.K.
45-28 3-Chome Sanno
Ohta-Ku Tokyo 143-0023
Tel. +81-3-37743731
Fax +81-3-37766500
info@jp.schunk.com
www.jp.schunk.com



Mexico

SCHUNK Intec S.A. de C.V.
Calle Pirineos # 513 Nave 6
Zona Industrial Benito Juárez
Querétaro, Qro. 76120
Tel. +52-442-211-7800
Fax +52-442-211-7829
info@mx.schunk.com
www.mx.schunk.com



Netherlands

SCHUNK Intec B.V.
Titaniumlaan 14
5221 CK 's-Hertogenbosch
Tel. +31-73-6441779
Fax +31-73-6448025
info@nl.schunk.com
www.nl.schunk.com



Norway

SCHUNK Intec AS
Hvervenmoeien 45 | 3511 Hønefoss
Tel. +47-210-33106
Fax +47-210-33107
info@no.schunk.com
www.no.schunk.com



Poland

SCHUNK Intec Sp.z o.o.
ul. Puławska 40A
05-500 Piaseczno
Tel. +48-22-7262500
Fax +48-22-7262525
info@pl.schunk.com
www.pl.schunk.com



Russia

SCHUNK Intec 000
ul. Belostrovskaya, 17, korp. 2, lit. A
St. Petersburg, 197342
Tel. +7-812-326-78-35
Fax +7-812-326-78-38
info@ru.schunk.com
www.ru.schunk.com



Singapore

SCHUNK Intec Pte. Ltd.
25 International Business Park
#03-51/52 German Centre
Singapore 609916
Tel. +65-6240-6851
Fax +65-6240-6852
info@sg.schunk.com
www.sg.schunk.com



Slovakia

SCHUNK Intec s.r.o.
Levická 7 | SK-949 01 Nitra
Tel. +421-37-3260610
Fax +421-37-3260699
info@sk.schunk.com
www.sk.schunk.com



South Korea

SCHUNK Intec Korea Ltd
#1207 ACE HIGH-END Tower 11th,
361 Simin-daero, Dongan-gu,
Anyang-si, Geonggido, 14057, Korea
Tel. +82-31-382-6141
Fax +82-31-382-6142
info@kr.schunk.com
www.kr.schunk.com



Spain, Portugal

SCHUNK Intec S.L.U.
Avda. Ernest Lluch, 32
TCM 3-6.01, ES-08302 Mataró (Barcelona)
Tel. +34-937 556 020
Fax +34-937 908 692
info@es.schunk.com
www.es.schunk.com



Sweden

SCHUNK Intec AB
Morabergsvägen 28
152 42 Södertälje
Tel. +46-8 554 421 00
Fax +46-8 554 421 01
info@se.schunk.com
www.se.schunk.com



Switzerland, Liechtenstein

SCHUNK Intec AG
Im Ifang 12 | 8307 Effretikon
Tel. +41-52-35431-31
Fax +41-52-35431-30
info@ch.schunk.com
www.ch.schunk.com



Turkey

SCHUNK Intec Bağlama Sistemleri ve
Otomasyon San. ve Tic. Ltd. Şti.
Küçükyalı İş Merkezi, Girne Mahallesi
Irmak Sokak, A Blok, No: 9
34852 Maltepe | Istanbul
Tel. +90-216-366-2111
Fax +90-216-366-2277
info@tr.schunk.com
www.tr.schunk.com



USA

SCHUNK Intec Inc.
211 Kitty Hawk Drive
Morrisville, NC 27560
Tel. +1-919-572-2705
info@us.schunk.com
www.us.schunk.com



Australia
Romheld Automation PTY. LTD.
Unit 30 | 115 Woodpark Road
Smithfield NSW 2164
Tel. +61-2-97211799
Fax +61-2-97211766
sales@romheld.com.au
www.romheld.com.au



Chile
Comercial Aranedo y CIA. LTDA.
Quinta Normal
Vargas Fontecilla # 4550 | Santiago
Tel. +56-2-7248123
Fax +56-2-7102036
caraneda@rotar.cl | www.rotar.cl



Colombia
Cav -
Control y Automatización Virtual Ltda.
43 Oficina 101 Avenida Esperanza N. 72B
Bogotá D.C.
Tel. +57-1-6608719
Fax +57-1-4109846
info@cavingenieros.com
www.cavingenieros.com

MIKRA CAD CAM CAE, LTDA
AC-3 # 310-87, Bogotá
Tel. +571-201-6379



Costa Rica
RECTIFICACION ALAJUELENSE, S.A.
100m al Oeste y 75m al Sur del
Cementerio Central de Alajuela, Alajuela
Tel. +506-2430-5111



Croatia
Bibus Zagreb d.o.o.
Anina 91 | 10000 Zagreb
Tel. +385-138-18004
Fax +385-138-18005
info@bibus.hr | www.bibus.hr

Okret d.o.o.
Majurina 16 | 21215 Kastel Luksic
Tel. +385-21-228449
Fax +385-21-228464
okret@okret.hr



Ecuador
ELIMED CIA. LTDA.
Calle El Progreso 0E1-111 y Manglaralto
Quito
Tel. +59-39-7784740



Estonia
DV-Tools OÜ
Peterburi tee 34/4 | 11415, Tallinn
Mobile Phone +372-56-655954
Fax +372-6030508
info@dv-tools.ee



Greece
Georg Gousoulis Co. O.E.
27, Riga Fereou Str.
14452 Metamorfoosi-Athens
Tel. +30-210-2846771
Fax +30-210-2824568
mail@gousoulis.gr | www.gousoulis.gr



Iceland
Formula 1 ehf
Bredamörk 25 | P.O. Box 1 61
810 Hveragerði
Tel. +354-5172200 | Fax +354-5172201
formula1@formula1.is



Indonesia
PT. Metaltech Indonesia
Jl. Gatot Subroto Km 8 | Tangerang 15136
Tel. +6221-55657435
Fax +6221-5918553
info@metaltechindonesia.com
www.metaltechindonesia.com



Iran
Iran Int. Procurement of Industries Co.
(I.I.P.L.)
No. 10, First alley, Golshan St.,
Khoramshahr Ave. | Tehran, 1554814771
Tel. +98-21-88750965
Fax +98-21-88750966
info@iipico.com



Israel
Ilan and Gavish Automation Service Ltd.
26, Shenkar St. | Qiryat-Arie 49513
P.O. Box 10118 | Petach-Tikva 49001
Tel. +972-3-9221824
Fax +972-3-9240761
nava@ilan-gavish.com
www.ilan-gavish.co.il

M. K. Sales
Arimon 44 St. | Mosave Gealya 76885
Tel. +972-52-8283391
Fax +972-8-9366026
moti@mk-sales.com
www.mk-sales.com



Latvia
Sia Instro
Lacplesa 87 | Riga, 1011
Tel. +371-67-288546
Fax +371-67-287787
maris@instro.lv | www.instro.lv



Malaysia
Precisetech Sdn. Bhd
Plant 1, 15 Lorong Perusahaan Maju 11
13600 Perai | Prai Penang
Tel. +604-5080288
Fax +604-5080988
sales@precisetech.com.my
www.precisetech.com.my

SK-TEC
Automation & Engineering Sdn. Bhd
No. 54-A, Jalan PU7/3,
Taman Puchong Utama
47100 Puchong
Selangor Darul Ehsan
Tel. +603-8060-8771
Fax +603-8060-8772
jeffery.koo@sk-tec.com.my
www.sk-tec.com.my



Peru
ANDES TECHNOLOGY S.A.C.
Avenida Flora Tristan 755
Lima
Tel. +51-1-3487611

MAQUINAS CNC, S.A.C.
Los Jazmines #143, Lima
Tel. +51-1-2750649



Philippines
Bon Industrial Sales
35 Macopa St. | Sta. Mesa Heights
Quezon City
Tel. +63-2-7342740
Fax +63-2-7124771
bonind@skynet.net



Romania
S.C. Inmaacro S.R.L.
Industrial Machines and Accessories Romania
Avram Iancu Nr. 86
505600 Sacele-Brasov
Tel. +40-368-443500
Fax +40-368-443501
info@inmaacro.com
www.inmaacro.com



Saudi Arabia
Alruqee Machine Tools Co. Ltd.
Head Office
P.O. Box 36 57 | Alkhobar 31952
Tel. +966-3-8470449
Fax +966-3-8474992
mailbox2@alruqee.com
www.alruqee.net



Singapore
BALLUFF ASIA PTE LTD
18 Sin Ming Lane
#06-41 Midview City
Singapore 573960
Tel. +65-625-24384
Fax +65-625-29060
balluff@balluff.com.sg
www.balluff.com.sg

Eureka Tools Pte Ltd.
194 Pandan Loop, # 04-10 Pantech,
Industrial Complex | Singapore 128383
Tel. +65-687-45781
Fax +65-687-45782
eureka@eureka.com.sg
www.eureka.com.sg



Slovenia
MB-Naklo Trgovsko Podjetje D.O.O.
Toma Zupana 16 | 04202 Naklo
Tel. +386-42-771700
Fax +386-42-771717
mb-naklo@mb-naklo.si
www.mb-naklo.si



South Africa
AGM Maschinenbau Pty. Ltd.
42 Sonneblom Road, East Village
Sunward Park 1459, Boksburg
Tel. +27-11-913-2525
Fax +27-11-913-2994
alfred@agm-machinery.com
www.agm-maschinenbau.co.za



South Korea
Mapal Hiteco Co., Ltd.
1NA-502, Shihwa Ind. Complex 1254-10,
Jungwong-dong, Shihung-city
Kyunggi-do, 429-450
Tel. +82-1661-0091
Fax +82-31-3190-861
hiteco@kornet.net | www.hiteco.co.kr



Taiwan
Accudyna Engineering Co., Ltd.
2 F, No. 885, Youn-Chun East 1st. Rd
40877 Taichung City
Tel. +886-4-23801788
Fax +886-4-23805511
sales@accudyna.com.tw
www.accudyna.com.tw

Yonchin Enterprises, Inc.
5F, No. 100, Hsing Der Rd.
San Chung City 241, Taiwan
Tel. +886-2-2278-9330
Fax +886-2-2278-9320
yon.chin@msa.hinet.net
www.yonchin.com



Thailand
BRAINWORKS CO., LTD.
1/161-162 Soi Watcharapol 2/7, Tharang
Bangkhen, Bangkok 10220
Tel. +66-2-0241470 to 1
Fax +66-2-0241472
chatchai@brainworks.co.th
www.brainworks.co.th



Ukraine
Center of Technical Support „Mem”LLC
Malysheva str., 11/25
Dnipropetrovsk 49026
Tel. | Fax. +38-056-378-4905
maxim.bayer@gmail.com
www.ctp-mem.com.ua

Fax Order

Copy, complete, fax to +49-7133-103-2399

Company

Name

Department

Street

ZIP

City

Tel.

Fax

VAT No.



Order

Pos.	Quantity	Type	ID
1			
2			
3			
4			
5			
6			
7			
8			
9			
10			

The general terms of sales and conditions of SCHUNK GmbH & Co. KG apply.
www.schunk.com

Date

Signature



Lauffen/Neckar

SCHUNK GmbH & Co. KG | Spann- und Greiftechnik
 Bahnhofstr. 106 - 134 | 74348 Lauffen/Neckar
 Tel. +49-7133-103-0
 Fax +49-7133-103-2399
 info@de.schunk.com | www.schunk.com



Brackenheim-Hausen

SCHUNK GmbH & Co. KG | Spann- und Greiftechnik
 Wilhelm-Maybach-Str. 3 | 74336 Brackenheim-Hausen
 Technical Sales +49-7133-103-2503
 Technical Support +49-7133-103-2696
 Fax +49-7133-103-2189
 automation@de.schunk.com | www.schunk.com



Huglfing

SCHUNK Montageautomation GmbH
 Auwiese 16 | 82386 Huglfing
 Member of SCHUNK Lauffen
 Tel. +49-8802-9070-30
 Fax +49-8802-9070-340
 info@de.schunk.com | www.schunk.com



Mengen

H.-D. SCHUNK GmbH & Co. Spanntechnik KG
 Lothringer Str. 23 | 88512 Mengen
 Tel. +49-7572-7614-0
 Fax +49-7572-7614-1039
 futter@de.schunk.com | www.schunk.com



St. Georgen

SCHUNK Electronic Solutions GmbH
 Am Tannwald 17 | 78112 St. Georgen
 Tel. +49-7725-9166-0
 Fax +49-7725-9166-5055
 electronic-solutions@de.schunk.com | www.schunk.com

Your local technical consultant
www.schunk.com/services/ansprechpartner/aussendienst



International



Morrisville/North Carolina, USA

SCHUNK Intec Inc.
 211 Kitty Hawk Drive | Morrisville, NC 27560
 Tel. +1-919-572-2705
 info@us.schunk.com | www.us.schunk.com

Copyright

All text drawings and product illustrations are subject to copyright and are the property of SCHUNK GmbH & Co. KG

Technical Changes

The data and illustrations in this catalog are not binding and only provide an approximate description. We reserve the right to make changes to the product delivered compared with the data and illustrations in this catalog, e.g. in respect of technical data, design, fittings, material and external appearance.



The SCHUNK Gripper Catalog

The world's most comprehensive gripper portfolio of more than 1,800 pages. Order now!



Reg. No. 003496 QM08



www.schunk.com/catalogorder

Competence

Competence Catalog Clamping Technology | Gripping Systems
The SCHUNK No. 1 service provider for your processing machines and automated production processes.

Quantity

Gripping Systems

Complete Program Gripping Systems
Catalogs SCHUNK Grippers, Rotary Modules, Linear Modules, Robot Accessories

SCHUNK Grippers

The compact SCHUNK Gripping Competence on over 1,760 pages

Linear Modules

The whole variety of SCHUNK Linear Modules on over 700 pages

Rotary Modules

High technology for rotary movements on more than 610 pages

Robot Accessories

The SCHUNK End-of-Arm Competence on over 830 pages
The optimal interaction between the robot arm and gripper

Product Overview Gripping Systems

SCHUNK Gripping Systems at a glance

Product Overview Mechatronics³

Alternative – Adaptable – Intelligent

Product Overview Linear Modules

SCHUNK Linear Modules at a glance

Product Overview Robot Accessories

SCHUNK Robot Accessories at a glance

Highlights New Products

Current innovations in SCHUNK Gripping Systems

Depanelling Machine

Product Overview Depanelling Machine
Solutions for the complete spectrum of depanelling technology

Clamping Technology

Complete Program Clamping Technology
Catalogs Toolholders, Stationary Workholding, Lathe Chucks, Chuck Jaws

Quantity

Toolholders

The complete precision toolholders range for perfect machining on around 520 pages

Lathe Chucks

Lathe chucks for sophisticated machining of world-renowned quality compact on 650 pages

Chuck Jaws

With 1,200 Types – the world's largest chuck jaw program on over 720 pages

Stationary Workholding

The largest modular system for individualists with more than 500 variants for workpiece clamping on around 830 pages

Product Overview

SCHUNK Clamping Technology at a glance

MAGNOS Magnetic Clamping Technology

5-sided workpiece machining in one set-up

Hydraulic Expansion Technology Special Solutions

More than 75,000 implemented customized clamping solutions for tool and workpiece

PLANOS Vacuum Clamping Technology

The universal, modular designed clamping system with high holding forces

SINO-R Expansion Toolholder

The specialist for thread milling

TRIBOS Polygonal Clamping Technology

The No. 1 in micro cutting

Highlights New Products

Current innovations in SCHUNK Clamping Technology

Company

Name

Department

Street

ZIP

City

Tel.

Fax

E-Mail

No. 1

for safe, precise gripping
and holding



J. Lehmann

Jens Lehmann, German goalkeeper legend,
SCHUNK brand ambassador since 2012
for safe, precise gripping and holding.
www.gb.schunk.com/Lehmann

852 minutes without a
goal against him in the
Champions League

681 minutes without a goal
against him in the national team

2 intercepted penalties
in the 2006 World Cup

1 headed goal as a goalie

0 defeats English Soccer Champion

and

More than **2,000,000**
sold precision toolholders

About **1,000,000**
delivered SCHUNK grippers

More than **100,000**
lathe chucks and stationary
workholding systems are in use
worldwide

More than **16,000,000**
sold standard chuck jaws

More than **75,000**
implemented hydraulic expansion
customer-specific solutions

SCHUNK GmbH & Co. KG
Spann- und Greiftechnik

Bahnhofstr. 106 - 134
D-74348 Lauffen/Neckar
Tel. +49-7133-103-2503
Fax +49-7133-103-2189
grippingsystems@de.schunk.com
www.schunk.com



www.youtube.com/SCHUNKHQ



www.twitter.com/SCHUNK_HQ



www.facebook.com/SCHUNK.HQ